

Anti-Phospho-GYS1-S641 antibody (STJ11101015)

STJ11101015

GENERAL INFORMATION

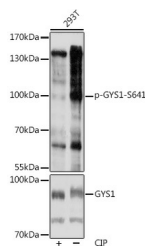
Product Type	Primary antibodies
Short Description	
Applications	WB/ELISA
Host/Source	Rabbit
Reactivity	Human/Mouse/Rat

PRODUCT PROPERTIES

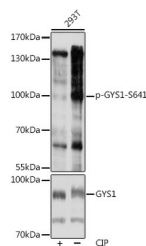
Clonality	Polyclonal
Clone ID	
Concentration	Lot specific
Conjugation	Unconjugated
Purification	Affinity purification
Dilution Range	WB:1:500-1:2000 ELISA:Recommended starting concentration is 1 Mu g/mL. Please optimize the concentration based on your specific assay requirements.
Formulation	PBS with 0.01% Thimerosal, 50% Glycerol, pH 7.3.
Isotype	IgG
Storage Instruction	Store at -20°C for up to 1 year from the date of receipt, and avoid repeat freeze-thaw cycles.

TARGET INFORMATION

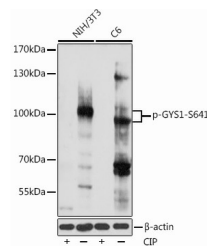
Gene ID	2997
Gene Symbol	GYS1
Uniprot ID	GYS1_HUMAN
Immunogen	PASVP
Immunogen Region	
Specificity	A synthetic phosphorylated peptide around S641 of human Glycogen synthase 1 (GYS1) (NP_002094.2).
Immunogen Sequence	PASVP



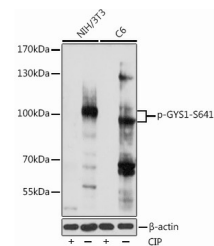
Western blot analysis of extracts of various cell lines, using Phospho-GYS1-S641 antibody (STJ11101015) at 1:1000 dilution. NIH/3T3 cells and C6 cells were treated by CIP (20uL/400uL) at 37 °C for 1 hour. Secondary antibody: HRP Goat Anti-rabbit IgG (H+L) at 1:10000 dilution. Lysates/proteins: 25ug per lane. Blocking buffer: 3% BSA. Detection: ECL Basic Kit. Exposure time: 10s.



Western blot analysis of lysates from 293T cells, using Phospho-GYS1-S641 polyclonal antibody (STJ11101015) at 1:1000 dilution or Glycogen synthase 1 (GYS1) antibody (A2519). 293T cells were treated by CIP (20uL/400uL) at 37 °C for 1 hour. Secondary antibody: HRP Goat Anti-Rabbit IgG (H+L) (STJS000856) at 1:10000 dilution. Lysates/proteins: 25 Mu g per lane. Blocking buffer: 3% BSA. Detection: ECL Basic Kit. Exposure time: 10s.



Western blot analysis of extracts of 293T cells, using Phospho-GYS1-S641 polyclonal antibody (STJ11101015) at 1:1000 dilution or Glycogen synthase 1 (GYS1) antibody (A2519). 293T cells were treated by CIP (20uL/400uL) at 37 °C for 1 hour. Secondary antibody: HRP Goat Anti-rabbit IgG (H+L) at 1:10000 dilution. Lysates/proteins: 25ug per lane. Blocking buffer: 3% BSA. Detection: ECL Basic Kit. Exposure time: 10s.



Western blot analysis of various lysates using Phospho-GYS1-S641 Rabbit polyclonal antibody (STJ11101015) at 1:1000 dilution. NIH/3T3 cells and C6 cells were treated by CIP (20uL/400uL) at 37 °C for 1 hour. Secondary antibody: HRP Goat Anti-Rabbit IgG (H+L) (STJS000856) at 1:10000 dilution. Lysates/proteins: 25 Mu g per lane. Blocking buffer: 3% BSA. Detection: ECL Basic Kit. Exposure time: 10s.

This product is suitable for in-vitro studies under the RESEARCH USE ONLY [RUO] licence. This product must not be used as for diagnostic or other medical purposes.
St John's Laboratory Ltd, Knowledge Dock Business Centre, University Way, London, E16 2RD | Tel: 0208 223 3081