

Anti-AMH antibody (360-560) (STJ11100954)

STJ11100954

GENERAL INFORMATION

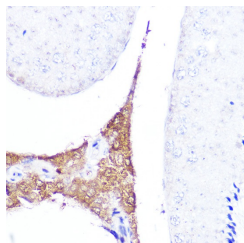
Product Type	Primary antibodies
Short Description	
Applications	WB/IHC-P/IF/ICC/ELISA
Host/Source	Rabbit
Reactivity	Human/Mouse/Rat

PRODUCT PROPERTIES

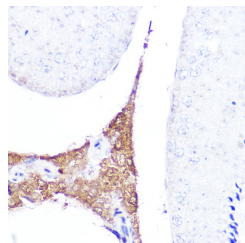
Clonality	Polyclonal
Clone ID	
Concentration	Lot specific
Conjugation	Unconjugated
Purification	Affinity purification
Dilution	WB: 1:500-1:1000
Range	IHC-P: 1:50-1:200 IF/ICC: 1:50-1:100 ELISA: Recommended starting concentration is 1 µg/mL. Please optimize the concentration based on your specific assay requirements.
Formulation	PBS with 0.05% Proclin300, 50% Glycerol, pH 7.3.
Isotype	IgG
Storage	Store at -20°C for up to 1 year from the date of receipt, and avoid repeat freeze-thaw cycles.
Instruction	

TARGET INFORMATION

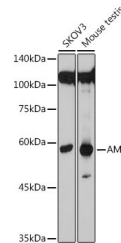
Gene ID	268
Gene Symbol	AMH
Uniprot ID	MIS_HUMAN
Immunogen	
Immunogen Region	360-560
Specificity	Recombinant fusion protein containing a sequence corresponding to amino acids 360-560 of human AMH (NP_000470.3).
Immunogen Sequence	PAPLHDPTSPAWATALARRV AAELQAAAAELRSLPGLPPA TAPLLARLLALCPGGPGGLG DPLRALLLKALQGLRVEWR GRDPRGPGRAQRSAGATAAD GPCALRELSVDLRAERSVLI PETYQANNCQGVCGWPQSDR NPYRGNHWLLKMQVRGAA LARPPCCVPTAYAGKLLISL SEERISAHVPMNVATECGC R



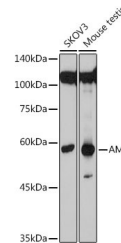
Western blot analysis of extracts of various cell lines, using AMH antibody (STJ11100954) at 1:500 dilution. Secondary antibody: HRP Goat Anti-rabbit IgG (H+L) at 1:10000 dilution. Lysates/proteins: 25 µg per lane. Blocking buffer: 3% non-fat dry milk in TBST. Detection: ECL Basic Kit. Exposure time: 10s.



Immunohistochemistry analysis of paraffin-embedded mouse testis using AMH Rabbit polyclonal antibody (STJ11100954) at dilution of 1:20 (40x lens). Perform high pressure antigen retrieval with 10 mM citrate buffer pH 6.0 before commencing with immunohistochemistry staining protocol.



Western blot analysis of extracts of various cell lines, using AMH antibody (STJ11100954) at 1:500 dilution. Secondary antibody: HRP Goat Anti-rabbit IgG (H+L) at 1:10000 dilution. Lysates/proteins: 25 µg per lane. Blocking buffer: 3% non-fat dry milk in TBST. Detection: ECL Basic Kit. Exposure time: 90s.



Western blot analysis of extracts of various cell lines, using AMH antibody (STJ11100954) at 1:500 dilution. Secondary antibody: HRP Goat Anti-rabbit IgG (H+L) at 1:10000 dilution. Lysates/proteins: 25 µg per lane. Blocking buffer: 3% nonfat dry milk in TBST. Detection: ECL Basic Kit. Exposure time: 90s.

This product is suitable for in-vitro studies under the RESEARCH USE ONLY [RUO] licence. This product must not be used as for diagnostic or other medical purposes.
St John's Laboratory Ltd, Knowledge Dock Business Centre, University Way, London, E16 2RD | Tel: 0208 223 3081