

Anti-PDGFD antibody (250-350) (STJ11100953)
STJ11100953

GENERAL INFORMATION

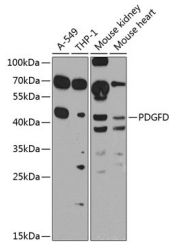
Product Type	Primary antibodies
Short Description	
Applications	WB/ELISA
Host/Source	Rabbit
Reactivity	Human/Mouse

PRODUCT PROPERTIES

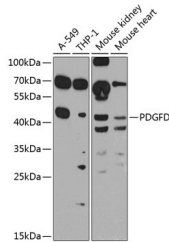
Clonality	Polyclonal
Clone ID	
Concentration	Lot specific
Conjugation	Unconjugated
Purification	Affinity purification
Dilution Range	WB:1:500-1:2000 ELISA:Recommended starting concentration is 1 Mu g/mL. Please optimize the concentration based on your specific assay requirements.
Formulation	PBS with 0.05% Proclin300, 50% Glycerol, pH 7.3.
Isotype	IgG
Storage	Store at -20°C for up to 1 year from the date of receipt, and avoid repeat freeze-thaw cycles.
Instruction	

TARGET INFORMATION

Gene ID	80310
Gene Symbol	PDGFD
Uniprot ID	PDGFD_HUMAN
Immunogen	
Immunogen Region	250-350
Specificity	A synthetic peptide corresponding to a sequence within amino acids 250-350 of human PDGFD (NP_079484.1).
Immunogen Sequence	SYHDRKSKVDLRLNDDAKR YSCTPRNYSVNIREELKLAN VVFFPRCLLVQRCGNGCGG TVNWRSC TCNSGKTVKYYHE VLQFEPGHIKRRGRAKTMAL V



Western blot analysis of extracts of various cell lines, using PDGFD antibody (STJ11100953) at 1:1000 dilution. Secondary antibody: HRP Goat Anti-rabbit IgG (H+L) at 1:10000 dilution. Lysates/proteins: 25ug per lane. Blocking buffer: 3% non-fat dry milk in TBST. Detection: ECL Enhanced Kit. Exposure time: 90s.



Western blot analysis of extracts of various cell lines, using PDGFD antibody (STJ11100953) at 1:1000 dilution. Secondary antibody: HRP Goat Anti-Rabbit IgG (H+L) (STJS000856) at 1:10000 dilution. Lysates/proteins: 25 Mu g per lane. Blocking buffer: 3% nonfat dry milk in TBST. Detection: ECL Enhanced Kit. Exposure time: 90s.

This product is suitable for in-vitro studies under the RESEARCH USE ONLY [RUO] licence. This product must not be used as for diagnostic or other medical purposes.
St John's Laboratory Ltd, Knowledge Dock Business Centre, University Way, London, E16 2RD | Tel: 0208 223 3081