

## Anti-SRF antibody (321-420) (STJ11100944)

STJ11100944

### GENERAL INFORMATION

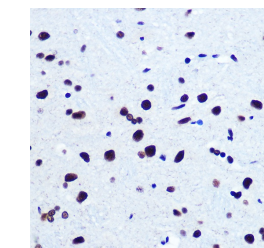
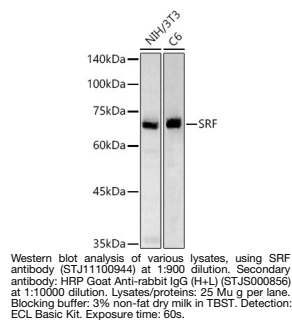
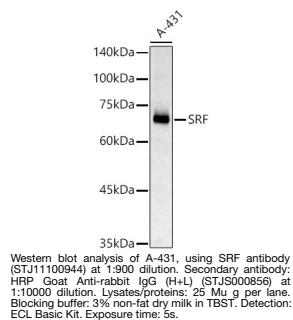
<b>Product Type</b>	Primary antibodies
<b>Short Description</b>	
<b>Applications</b>	WB/IHC-P/ELISA
<b>Host/Source</b>	Rabbit
<b>Reactivity</b>	Human/Mouse/Rat

### PRODUCT PROPERTIES

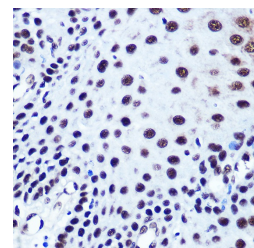
<b>Clonality</b>	Polyclonal
<b>Clone ID</b>	
<b>Concentration</b>	Lot specific
<b>Conjugation</b>	Unconjugated
<b>Purification</b>	Affinity purification
<b>Dilution Range</b>	WB:1:500-1:1000 IHC-P:1:50-1:200 ELISA:Recommended starting concentration is 1 Mu g/mL. Please optimize the concentration based on your specific assay requirements.
<b>Formulation</b>	PBS with 0.05% Proclin300, 50% Glycerol, pH 7.3.
<b>Isotype</b>	IgG
<b>Storage</b>	Store at -20°C for up to 1 year from the date of receipt, and avoid repeat freeze-thaw cycles.
<b>Instruction</b>	

### TARGET INFORMATION

<b>Gene ID</b>	6722
<b>Gene Symbol</b>	SRF
<b>Uniprot ID</b>	SRF_HUMAN
<b>Immunogen</b>	
<b>Immunogen Region</b>	321-420
<b>Specificity</b>	A synthetic peptide corresponding to a sequence within amino acids 321-420 of human SRF (NP_003122.1). TVLKSTGSGPVSSGGLMQLP TSFTLMPGGAVAQVVPQAI QVHQAPQQASPSRDSSTDLT QTSSSGTVTLPATIMTSSVP
<b>Immunogen Sequence</b>	TTVGGHMMYPSHAVMYAPT



Immunohistochemistry analysis of paraffin-embedded rat brain using SRF rabbit polyclonal antibody (STJ11100944) at dilution of 1:100 (40x lens). Perform microwave antigen retrieval with 10 mM PBS buffer pH 7.2 before commencing with immunohistochemistry staining protocol.



Immunohistochemistry analysis of paraffin-embedded human esophageal using SRF rabbit polyclonal antibody (STJ11100944) at dilution of 1:100 (40x lens). Perform microwave antigen retrieval with 10 mM PBS buffer pH 7.2 before commencing with immunohistochemistry staining protocol.

This product is suitable for in-vitro studies under the RESEARCH USE ONLY [RUO] licence. This product must not be used as for diagnostic or other medical purposes.  
St John's Laboratory Ltd, Knowledge Dock Business Centre, University Way, London, E16 2RD | Tel: 0208 223 3081