

Anti-LGALS2 antibody (1-74) (STJ11100928)

STJ11100928

GENERAL INFORMATION

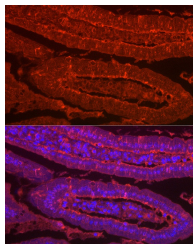
Product Type	Primary antibodies
Short Description	
Applications	WB/IF/ICC/ELISA
Host/Source	Rabbit
Reactivity	Human/Mouse

PRODUCT PROPERTIES

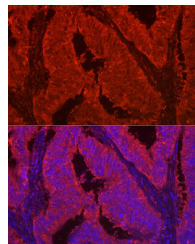
Clonality	Polyclonal
Clone ID	
Concentration	Lot specific
Conjugation	Unconjugated
Purification	Affinity purification
Dilution Range	WB:1:100-1:500 IF/ICC:1:50-1:200 ELISA:Recommended starting concentration is 1 µg/mL. Please optimize the concentration based on your specific assay requirements.
Formulation	PBS with 0.01% Thimerosal, 50% Glycerol, pH 7.3.
Isotype	IgG
Storage Instruction	Store at -20°C for up to 1 year from the date of receipt, and avoid repeat freeze-thaw cycles.

TARGET INFORMATION

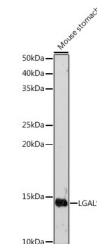
Gene ID	3957
Gene Symbol	LGALS2
Uniprot ID	LEG2_HUMAN
Immunogen	
Immunogen Region	1-74
Specificity	Recombinant fusion protein containing a sequence corresponding to amino acids 1-74 of human LGALS2 (NP_006489.1).
Immunogen Sequence	MTGELEVKNMDMKPGSTLKI TGSADGTDGFVINLGQGTDLKLNLFNPRFSESTIVCNLS DGSNWGQEQREDHL



Immunofluorescence analysis of mouse Intestine using LGALS2 Rabbit polyclonal antibody (STJ11100928) at dilution of 1:100 (40x lens). Blue: DAPI for nuclear staining.



Immunofluorescence analysis of human colon carcinoma using LGALS2 Rabbit polyclonal antibody (STJ11100928) at dilution of 1:100 (40x lens). Blue: DAPI for nuclear staining.



Western blot analysis of extracts of Mouse stomach, using LGALS2 antibody (STJ11100928) at 1:500 dilution. Secondary antibody: HRP Goat Anti-Rabbit IgG (H+L) (STJ5000856) at 1:10000 dilution. Lysates/proteins: 25 µg per lane. Blocking buffer: 3% nonfat dry milk in TBST. Detection: ECL Basic Kit. Exposure time: 180s.