

Anti-NPPB antibody (103-134) (STJ11100887)

STJ11100887

GENERAL INFORMATION

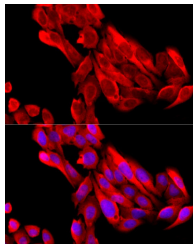
Product Type	Primary antibodies
Short Description	
Applications	WB/IHC-P/IF/ICC/ELISA
Host/Source	Rabbit
Reactivity	Human/Mouse/Rat

PRODUCT PROPERTIES

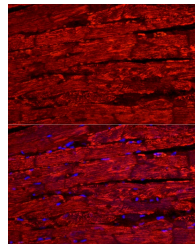
Clonality	Polyclonal
Clone ID	
Concentration	Lot specific
Conjugation	Unconjugated
Purification	Affinity purification
Dilution Range	WB:1:1000-1:5000 IHC-P:1:50-1:200 IF/ICC:1:50-1:200 ELISA:Recommended starting concentration is 1 µg/mL. Please optimize the concentration based on your specific assay requirements.
Formulation	PBS with 0.09% Sodium Azide, 50% Glycerol, pH 7.3.
Isotype	IgG
Storage	Store at -20°C for up to 1 year from the date of receipt, and avoid repeat freeze-thaw cycles.
Instruction	

TARGET INFORMATION

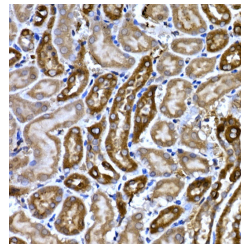
Gene ID	4879
Gene Symbol	NPPB
Uniprot ID	ANFB_HUMAN
Immunogen	
Immunogen Region	103-134
Specificity	A synthetic peptide corresponding to a sequence within amino acids 35-134 of human BNP (NP_002512.1).
Immunogen Sequence	ASDLETSGLQEQRNHLQGKL SELQVEQTSLEPLQESPRPT GVWKSREVATEGIRGHRKMV LYTLRAPRSPKMQGSGCFG RKMDRISSSSGLGCKVLRH



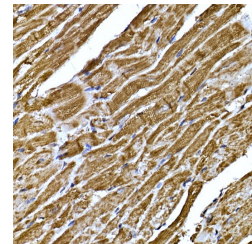
Immunofluorescence analysis of U2OS cells using BNP Rabbit polyclonal antibody (STJ11100887) at dilution of 1:200 (40x lens). Secondary antibody: Cy3 Goat Anti-Rabbit IgG (H+L) at 1:500 dilution. Blue: DAPI for nuclear staining.



Perform high pressure antigen retrieval with 10 mM citrate buffer pH 6.0 before commencing with IF staining protocol. Immunofluorescence analysis of paraffin-embedded rat heart using BNP Rabbit polyclonal antibody (STJ11100887) at dilution of 1:200 (40x lens). Secondary antibody: Cy3 Goat Anti-Rabbit IgG (H+L) at 1:500 dilution. Blue: DAPI for nuclear staining.



Immunohistochemistry analysis of BNP in paraffin-embedded mouse kidney using BNP Rabbit polyclonal antibody (STJ11100887) at dilution of 1:200 (40x lens). Perform high pressure antigen retrieval with 10 mM citrate buffer pH 6.0 before commencing with immunohistochemistry staining protocol.



Immunohistochemistry analysis of BNP in paraffin-embedded mouse heart using BNP Rabbit polyclonal antibody (STJ11100887) at dilution of 1:200 (40x lens). Perform high pressure antigen retrieval with 10 mM citrate buffer pH 6.0 before commencing with immunohistochemistry staining protocol.

This product is suitable for in-vitro studies under the RESEARCH USE ONLY [RUO] licence. This product must not be used as for diagnostic or other medical purposes.
St John's Laboratory Ltd, Knowledge Dock Business Centre, University Way, London, E16 2RD | Tel: 0208 223 3081