

## Anti-TWF2 antibody (1-369) (STJ11100773)

STJ11100773

### GENERAL INFORMATION

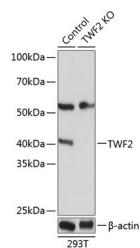
|                          |                    |
|--------------------------|--------------------|
| <b>Product Type</b>      | Primary antibodies |
| <b>Short Description</b> |                    |
| <b>Applications</b>      | WB/ELISA           |
| <b>Host/Source</b>       | Rabbit             |
| <b>Reactivity</b>        | Human/Mouse        |

### PRODUCT PROPERTIES

|                      |  |
|----------------------|--|
| <b>Clonality</b>     | Polyclonal   |
| <b>Clone ID</b>      |  |
| <b>Concentration</b> | Lot specific   |
| <b>Conjugation</b>   | Unconjugated   |
| <b>Purification</b>  | Affinity purification  |
| <b>Dilution</b>      | WB:1:500-1:2000  |
| <b>Range</b>         | ELISA:Recommended starting concentration is 1 $\mu$ g/mL. Please optimize the concentration based on your specific assay requirements. |
| <b>Formulation</b>   | PBS with 0.01% Thimerosal, 50% Glycerol, pH 7.3.   |
| <b>Isotype</b>       | IgG  |
| <b>Storage</b>       | Store at -20°C for up to 1 year from the date of receipt, and avoid repeat freeze-thaw cycles.   |
| <b>Instruction</b>   |  |

### TARGET INFORMATION

|                           |  |
|---------------------------|--|
| <b>Gene ID</b>            | 11344  |
| <b>Gene Symbol</b>        | TWF2   |
| <b>Uniprot ID</b>         | TWF2_HUMAN   |
| <b>Immunogen</b>          |  |
| <b>Immunogen Region</b>   | 1-369  |
| <b>Specificity</b>        | Recombinant fusion protein containing a sequence corresponding to amino acids 1-369 of human TWF2 (NP_009215.1).<br>MAHQGTGIIHATEELKEFFAKA RAGSVRLIKVIEDEQLVLG ASQEPVGRWDQDYDRAVLPL LDAQQPCYLLYRLDSQNAQG<br>FEWFLAWSPDNSPVRLKML YAATRATVKKEFGGGHIKDE LFGTVKDDLSFAGYQKHLSS CAAPAPLTSARELQQRIN<br>EVKTEIVESVKHQTLLQLAF PLQPEAQRALQQLKQKVMVNY IQMKLDERETIELVHTEPT DVAQLPSRVPRDAARYHFF |
| <b>Immunogen Sequence</b> |  |



Western blot analysis of lysates from wild type (WT) and TWF2 knockout (KO) 293T cells, using [KO Validated] TWF2 Rabbit polyclonal antibody (STJ11100773) at 1:1000 dilution. Secondary antibody: HRP Goat Anti-Rabbit IgG (H+L) (STJS000856) at 1:10000 dilution. Lysates/proteins: 25  $\mu$ g per lane. Blocking buffer: 3% nonfat dry milk in TBST. Detection: ECL Basic Kit. Exposure time: 1s.

This product is suitable for in-vitro studies under the RESEARCH USE ONLY [RUO] licence. This product must not be used as for diagnostic or other medical purposes.

St John's Laboratory Ltd, Knowledge Dock Business Centre, University Way, London, E16 2RD | Tel: 0208 223 3081