

Anti-CXCL10 antibody (22-98) (STJ11100596)

STJ11100596

GENERAL INFORMATION

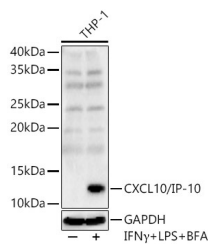
Product Type	Primary antibodies
Short Description	
Applications	WB/IF/ICC/ELISA
Host/Source	Rabbit
Reactivity	Human/Mouse

PRODUCT PROPERTIES

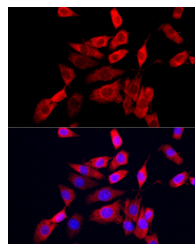
Clonality	Polyclonal
Clone ID	
Concentration	Lot specific
Conjugation	Unconjugated
Purification	Affinity purification
Dilution Range	WB:1:1000-1:5000 IF/ICC:1:50-1:200 ELISA:Recommended starting concentration is 1 µg/mL. Please optimize the concentration based on your specific assay requirements.
Formulation	PBS with 0.05% Proclin300, 50% Glycerol, pH 7.3.
Isotype	IgG
Storage Instruction	Store at -20°C for up to 1 year from the date of receipt, and avoid repeat freeze-thaw cycles.

TARGET INFORMATION

Gene ID	3627
Gene Symbol	CXCL10
Uniprot ID	CXL10_HUMAN
Immunogen	
Immunogen Region	22-98
Specificity	Recombinant fusion protein containing a sequence corresponding to amino acids 22-98 of human CXCL10/IP-10 (NP_001556.2).
Immunogen Sequence	VPLSRTVRCICISINQPVN PRSLEKLEIPASQFCPRVE IATMKKKGEKRLNPESKA IKNLLKAVSKERSKRSP



Western blot analysis of THP-1, using CXCL10/IP-10 antibody (STJ11100596) at 1:3000 dilution. THP-1 cells were treated by LPS for 6 hours, Brefeldin A for 3 hours and IFN Gamma (50ng/ml) for 8 hours of stimulation. Secondary antibody: HRP Goat Anti-rabbit IgG (H+L) (STJS000856) at 1:10000 dilution. Lysates/proteins: 25 µg per lane. Blocking buffer: 3% non-fat dry milk in TBST. Detection: ECL Basic Kit. Exposure time: 30s.



Immunofluorescence analysis of NIH/3T3 cells using CXCL10/IP-10 rabbit polyclonal antibody (STJ11100596) at dilution of 1:200 (40x lens). Blue: DAPI for nuclear staining.

This product is suitable for in-vitro studies under the RESEARCH USE ONLY [RUO] licence. This product must not be used as for diagnostic or other medical purposes.
St John's Laboratory Ltd, Knowledge Dock Business Centre, University Way, London, E16 2RD | Tel: 0208 223 3081