

Anti-BRD3 antibody (500-600) (STJ11100592)

STJ11100592

GENERAL INFORMATION

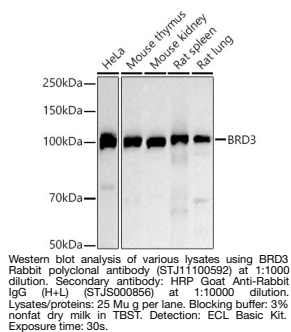
Product Type	Primary antibodies
Short Description	
Applications	WB/ELISA
Host/Source	Rabbit
Reactivity	Human/Mouse/Rat

PRODUCT PROPERTIES

Clonality	Polyclonal
Clone ID	
Concentration	Lot specific
Conjugation	Unconjugated
Purification	Affinity purification
Dilution Range	WB:1:500-1:1000 ELISA:Recommended starting concentration is 1 Mu g/mL. Please optimize the concentration based on your specific assay requirements.
Formulation	PBS with 0.05% Proclin300, 50% Glycerol, pH 7.3.
Isotype	IgG
Storage	Store at -20°C for up to 1 year from the date of receipt, and avoid repeat freeze-thaw cycles.
Instruction	

TARGET INFORMATION

Gene ID	8019
Gene Symbol	BRD3
Uniprot ID	BRD3_HUMAN
Immunogen	
Immunogen Region	500-600
Specificity	A synthetic peptide corresponding to a sequence within amino acids 500-600 of human BRD3 (NP_031397.1).
Immunogen Sequence	KKKDKKEKEKHKVKAEEEEK KAKVAPPAQAQKKKAPAKK ANSTTTAGRQLKKGGKQASA SYDSEEEEEGLPMSYDEKRRQ LSLDINRLPGEKLGRRVHHI Q



This product is suitable for in-vitro studies under the RESEARCH USE ONLY [RUO] licence. This product must not be used as for diagnostic or other medical purposes.
St John's Laboratory Ltd, Knowledge Dock Business Centre, University Way, London, E16 2RD | Tel: 0208 223 3081