

Anti-CTCF antibody (1-260) (STJ11100563)

STJ11100563

GENERAL INFORMATION

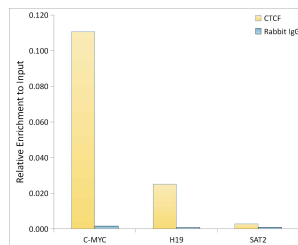
Product Type	Primary antibodies
Short Description	
Applications	WB/IHC-P/IP/ELISA/ChIP
Host/Source	Rabbit
Reactivity	Human/Mouse/Rat

PRODUCT PROPERTIES

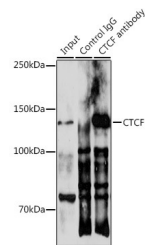
Clonality	Polyclonal
Clone ID	
Concentration	Lot specific
Conjugation	Unconjugated
Purification	Affinity purification
Dilution	WB:1:500-1:2000
Range	IHC-P:1:50-1:200
	IP:0.5 Mu g-4 Mu g antibody for 200 Mu g-400 Mu g extracts of whole cells
	ELISA:Recommended starting concentration is 1 Mu g/mL. Please optimize the concentration based on your specific assay requirements.
Formulation	PBS with 0.01% Thimerosal, 50% Glycerol, pH 7.3.
Isotype	IgG
Storage	Store at-20°C for up to 1 year from the date of receipt, and avoid repeat freeze-thaw cycles.
Instruction	

TARGET INFORMATION

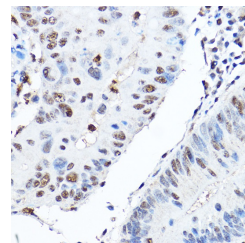
Gene ID	10664
Gene Symbol	CTCF
Uniprot ID	CTCF_HUMAN
Immunogen	
Immunogen Region	1-260
Specificity	Recombinant fusion protein containing a sequence corresponding to amino acids 1-260 of human CTCF (NP_006556.1).
Immunogen Sequence	MEGDVAEIVAESETFIKGG ERKTYQRRREGGQEEADACHL PQNQTDGGGEVVDVNSSVQM VMMEQLDPTLLQMKTEVMMEG TVAPEAAEAVDDTQIITLQV VNMEEQPINIGELQLVQVPV PVTVPVATTSSVEELQGAYEN EVSKEGLAESEPMICHTLPL PEGFQVVKVGANGEVETLEQ GELPPQEDPSWQKDPDYQPP AKKTKTKKSKLRYTEEGKD VDVSVYDFEEEQQEGLLSE



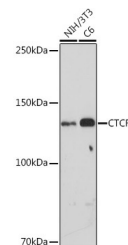
Chromatin immunoprecipitation analysis of extracts of HeLa cells, using [KD Validated] CTCF Rabbit polyclonal antibody (STJ11100563) and rabbit IgG. The amount of immunoprecipitated DNA was checked by quantitative PCR. Histogram was constructed by the ratios of the immunoprecipitated DNA to the input.



Immunoprecipitation analysis of 300 Mu g extracts of 293T cells using 3 Mu g [KD Validated] CTCF Rabbit polyclonal antibody (STJ11100563). Western blot was performed from the immunoprecipitate using CTCF antibody (STJ11100563) at a dilution of 1:500.



Immunohistochemistry analysis of CTCF in paraffin-embedded human colon carcinoma using [KD Validated] CTCF Rabbit polyclonal antibody (STJ11100563) at dilution of 1:200 (40x lens). Perform high pressure antigen retrieval with 10 mM citrate buffer pH 6, 0 before commencing with immunohistochemistry staining protocol.



Western blot analysis of various lysates using [KD Validated] CTCF Rabbit polyclonal antibody (STJ11100563) at 1:500 dilution. Secondary antibody: HRP Goat Anti-Rabbit IgG (H+L) (STJS000856) at 1:10000 dilution. Lysates/proteins: 25 Mu g per lane. Blocking buffer: 3% nonfat dry milk in TBST. Detection: ECL Basic Kit. Exposure time: 30s.

This product is suitable for in-vitro studies under the RESEARCH USE ONLY [RUO] licence. This product must not be used as for diagnostic or other medical purposes.
St John's Laboratory Ltd, Knowledge Dock Business Centre, University Way, London, E16 2RD | Tel: 0208 223 3081