

Anti-PPP2R2B/PPP2R2C antibody (108-220) (STJ11100523)

STJ11100523

GENERAL INFORMATION

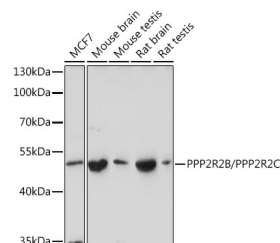
Product Type	Primary antibodies
Short Description	
Applications	WB/ELISA
Host/Source	Rabbit
Reactivity	Human/Mouse/Rat

PRODUCT PROPERTIES

Clonality	Polyclonal
Clone ID	
Concentration	Lot specific
Conjugation	Unconjugated
Purification	Affinity purification
Dilution Range	WB:1:500-1:2000 ELISA:Recommended starting concentration is 1 µg/mL. Please optimize the concentration based on your specific assay requirements.
Formulation	PBS with 0.01% Thimerosal, 50% Glycerol, pH 7.3.
Isotype	IgG
Storage	Store at -20°C for up to 1 year from the date of receipt, and avoid repeat freeze-thaw cycles.
Instruction	

TARGET INFORMATION

Gene ID	5522 5521
Gene Symbol	PPP2R2C PPP2R2B
Uniprot ID	2ABG_HUMAN 2ABB_HUMAN
Immunogen	
Immunogen Region	108-220
Specificity	Recombinant fusion protein containing a sequence corresponding to amino acids 108-220 of human PPP2R2B/PPP2R2C (NP_858060.2).
Immunogen Sequence	GDKGGRVVFQREQESKNQV HRRGEYNVYSTFQSHEPEFD YLKSLEIEEKIRWLPQQ NAAFYLLSTNDKTVKLWKVS ERDKRPEGYNLKDEEGRRLD PATITTLRVPVLR



Western blot analysis of various lysates using Anti-PPP2R2B/PPP2R2C Rabbit polyclonal antibody (STJ11100523) at 1:1000 dilution. Secondary antibody: HRP Goat Anti-Rabbit IgG (H+L) (STJ1000856) at 1:10000 dilution. Lysates/proteins: 25 µg per lane. Blocking buffer: 3% nonfat dry milk in TBST. Detection: ECL Basic Kit. Exposure time: 5s.

This product is suitable for in-vitro studies under the RESEARCH USE ONLY [RUO] licence. This product must not be used as for diagnostic or other medical purposes.
St John's Laboratory Ltd, Knowledge Dock Business Centre, University Way, London, E16 2RD | Tel: 0208 223 3081