

Anti-LMAN2L antibody (189-348) (STJ11100456)

STJ11100456

GENERAL INFORMATION

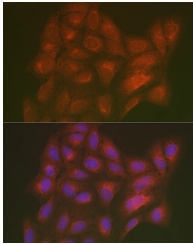
Product Type	Primary antibodies
Short Description	
Applications	WB/IF/ICC/ELISA
Host/Source	Rabbit
Reactivity	Human/Mouse/Rat

PRODUCT PROPERTIES

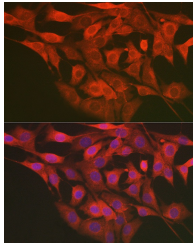
Clonality	Polyclonal
Clone ID	
Concentration	Lot specific
Conjugation	Unconjugated
Purification	Affinity purification
Dilution	WB:1:500-1:1000
Range	IF/CC:1:50-1:200
	ELISA:Recommended starting concentration is 1 Mu g/mL. Please optimize the concentration based on your specific assay requirements.
Formulation	PBS with 0.05% Proclin300, 50% Glycerol, pH 7.3.
Isotype	IgG
Storage Instruction	Store at -20°C for up to 1 year from the date of receipt, and avoid repeat freeze-thaw cycles.

TARGET INFORMATION

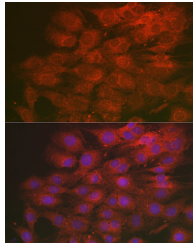
Gene ID	81562
Gene Symbol	LMAN2L
Uniprot ID	LMA2L_HUMAN
Immunogen	
Immunogen Region	189-348
Specificity	Recombinant fusion protein containing a sequence corresponding to amino acids 189-348 of human LMAN2L (NP_110432.1).
Immunogen Sequence	ERDGRPTELGGCTAIVRNH YDTFLVIRYVKRHLTIMMDI DGKHEWRDCIEVPGVRLPRG YYFGTSSITGDLSDNHDVIS LKLFELTVERTPEEKLHRD VFLPSVDNMKLPENTAPLPP LSGLALFLIVFFSLVFSVFA IVIGIILYNKWQEQRKRFP



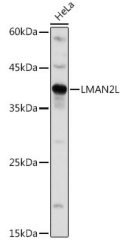
Immunofluorescence analysis of U2OS cells using LMAN2L Rabbit polyclonal antibody (STJ11100456) at dilution of 1:200 (40x lens). Blue: DAPI for nuclear staining.



Immunofluorescence analysis of NIH/3T3 cells using LMAN2L Rabbit polyclonal antibody (STJ11100456) at dilution of 1:200 (40x lens). Blue: DAPI for nuclear staining.



Immunofluorescence analysis of C6 cells using LMAN2L Rabbit polyclonal antibody (STJ11100456) at dilution of 1:200 (40x lens). Blue: DAPI for nuclear staining.



Western blot analysis of extracts of HeLa cells, using LMAN2L antibody (STJ11100456) at 1:1000 dilution. Secondary antibody: HRP Goat Anti-Rabbit IgG (H+L) (STJS000856) at 1:10000 dilution. Lysates/proteins: 25 Mu g per lane. Blocking buffer: 3% nonfat dry milk in TBST. Detection: ECL Basic Kit. Exposure time: 3s.

This product is suitable for in-vitro studies under the RESEARCH USE ONLY [RUO] licence. This product must not be used as for diagnostic or other medical purposes.
St John's Laboratory Ltd, Knowledge Dock Business Centre, University Way, London, E16 2RD | Tel: 0208 223 3081