

Anti-Histone H1 antibody (150-207) (STJ11100449)

STJ11100449

GENERAL INFORMATION

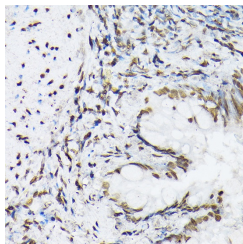
Product Type	Primary antibodies
Short Description	
Applications	WB/IHC-P/ELISA
Host/Source	Rabbit
Reactivity	Human/Mouse/Rat

PRODUCT PROPERTIES

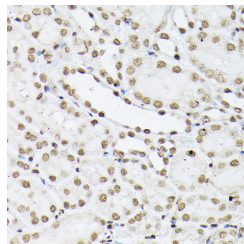
Clonality	Polyclonal
Clone ID	
Concentration	Lot specific
Conjugation	Unconjugated
Purification	Affinity purification
Dilution Range	WB:1:500-1:2000 IHC-P:1:50-1:200 ELISA:Recommended starting concentration is 1 µg/mL. Please optimize the concentration based on your specific assay requirements.
Formulation	PBS with 0.01% Thimerosal, 50% Glycerol, pH 7.3.
Isotype	IgG
Storage Instruction	Store at -20°C for up to 1 year from the date of receipt, and avoid repeat freeze-thaw cycles.

TARGET INFORMATION

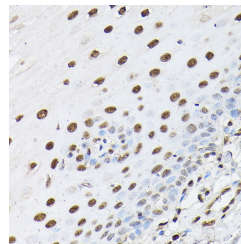
Gene ID	3010
Gene Symbol	H1-6
Uniprot ID	H1T_HUMAN
Immunogen	
Immunogen Region	150-207
Specificity	A synthetic peptide corresponding to a sequence within amino acids 150-207 of human Histone H1t (NP_005314.2).
Immunogen Sequence	NKRRAKPRATTPTKTVRSGRK AKGAKGKQQKSPVKARASK SKLTQHHEVNVKATSKK



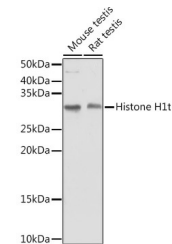
Immunohistochemistry analysis of Histone H1t in paraffin-embedded rat lung using Histone H1t Rabbit polyclonal antibody (STJ11100449) at dilution of 1:100 (40x lens). Perform high pressure antigen retrieval with 10 mM citrate buffer pH 6.0 before commencing with immunohistochemistry staining protocol.



Immunohistochemistry analysis of Histone H1t in paraffin-embedded mouse kidney using Histone H1t Rabbit polyclonal antibody (STJ11100449) at dilution of 1:100 (40x lens). Perform high pressure antigen retrieval with 10 mM citrate buffer pH 6.0 before commencing with immunohistochemistry staining protocol.



Immunohistochemistry analysis of Histone H1t in paraffin-embedded human esophageal using Histone H1t Rabbit polyclonal antibody (STJ11100449) at dilution of 1:100 (40x lens). Perform high pressure antigen retrieval with 10 mM citrate buffer pH 6.0 before commencing with immunohistochemistry staining protocol.



Western blot analysis of various lysates using Histone H1t Rabbit polyclonal antibody (STJ11100449) at 1:1000 dilution. Secondary antibody: HRP Goat Anti-Rabbit IgG (H+L) (STJS000856) at 1:10000 dilution. Lysates/proteins: 25 µg per lane. Blocking buffer: 3% nonfat dry milk in TBST. Detection: ECL Basic Kit. Exposure time: 10s.

This product is suitable for in-vitro studies under the RESEARCH USE ONLY [RUO] licence. This product must not be used as for diagnostic or other medical purposes.
St John's Laboratory Ltd, Knowledge Dock Business Centre, University Way, London, E16 2RD | Tel: 0208 223 3081