

Anti-SMC3 antibody (909-1199) (STJ11100356)
STJ11100356

GENERAL INFORMATION

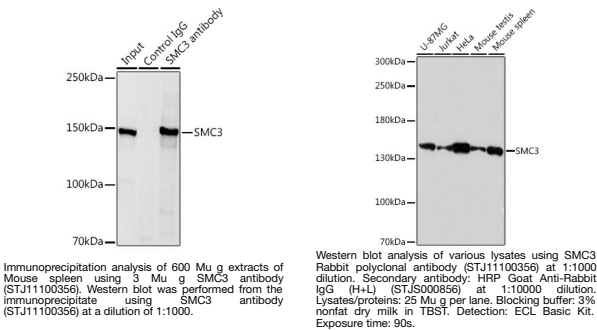
Product Type	Primary antibodies
Short Description	
Applications	WB/IP/ELISA
Host/Source	Rabbit
Reactivity	Human/Mouse

PRODUCT PROPERTIES

Clonality	Polyclonal
Clone ID	
Concentration	Lot specific
Conjugation	Unconjugated
Purification	Affinity purification
Dilution	WB:1:500-1:2000
Range	IP:0.5 Mu g-4 Mu g antibody for 400 Mu g-600 Mu g extracts of whole cells ELISA:Recommended starting concentration is 1 Mu g/mL. Please optimize the concentration based on your specific assay requirements.
Formulation	PBS with 0.01% Thimerosal, 50% Glycerol, pH 7.3.
Isotype	IgG
Storage Instruction	Store at -20°C for up to 1 year from the date of receipt, and avoid repeat freeze-thaw cycles.

TARGET INFORMATION

Gene ID	9126
Gene Symbol	SMC3
Uniprot ID	SMC3_HUMAN
Immunogen	
Immunogen Region	909-1199
Specificity	Recombinant fusion protein containing a sequence corresponding to amino acids 909-1199 of human SMC3 (NP_005436.1).
Immunogen Sequence	KEHMDAINHDTKELEKMTNR QGMLLKKKEECMKKIRELGS LPQEA FEKYQTL SLKQLFRK LEQCNTLKKYSHVNNKALD QFVN FSEQEKL IKRQEELD RGYKSIMELMNVLELRKYEA IQLTFKQVSKNFSEVFQKLV PGGKATLVMKKGDVEGSQSQ DEGE GSGESERGSQSQSSVP SVDQFTGVGIRVSFTGKQGE MREMQLSGGQKSLVALALI FAIQKCDPAPFYLFDEIDQ



This product is suitable for in-vitro studies under the RESEARCH USE ONLY [RUO] licence. This product must not be used as for diagnostic or other medical purposes.
St John's Laboratory Ltd, Knowledge Dock Business Centre, University Way, London, E16 2RD | Tel: 0208 223 3081