

# Anti-RBMY1A1 antibody (90-300) (STJ11100329)

STJ11100329

## GENERAL INFORMATION

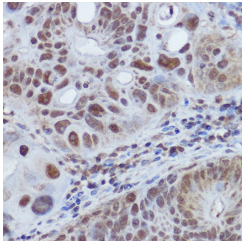
<b>Product Type</b>	Primary antibodies
<b>Short Description</b>	
<b>Applications</b>	IHC-P/IF/ICC/ELISA
<b>Host/Source</b>	Rabbit
<b>Reactivity</b>	Human/Mouse/Rat

## PRODUCT PROPERTIES

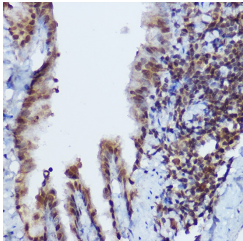
<b>Clonality</b>	Polyclonal
<b>Clone ID</b>	
<b>Concentration</b>	Lot specific
<b>Conjugation</b>	Unconjugated
<b>Purification</b>	Affinity purification
<b>Dilution</b>	IHC-P:1:50-1:200
<b>Range</b>	IF/CC:1:50-1:200
	ELISA:Recommended starting concentration is 1 $\mu$ g/mL. Please optimize the concentration based on your specific assay requirements.
<b>Formulation</b>	PBS with 0.01% Thimerosal, 50% Glycerol, pH 7.3.
<b>Isotype</b>	IgG
<b>Storage Instruction</b>	Store at -20°C for up to 1 year from the date of receipt, and avoid repeat freeze-thaw cycles.

## TARGET INFORMATION

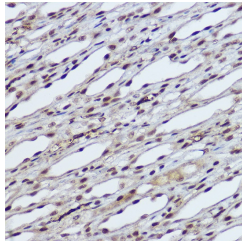
<b>Gene ID</b>	5940
<b>Gene Symbol</b>	RBMY1A1
<b>Uniprot ID</b>	RBY1A_HUMAN
<b>Immunogen</b>	
<b>Immunogen Region</b>	90-300
<b>Specificity</b>	Recombinant fusion protein containing a sequence corresponding to amino acids 90-300 of human RBMY1A1 (NP_005049.1).
<b>Immunogen Sequence</b>	SGGRRRPPASSRNRSPSGSL RSARGSRGGTRGWLPSHEGH LDDGGYTPDLKMSYSRGLIP VKRGPSSRSRGPPPKKSAPS AVARSNSWMGSQGPMSQRRE NYGVPPRRATISSWRNDRMS TRHDGYATNDGNHPSCQETR DYAPPSRGYAYRDNHGSNRD EHSSRGYRNRHSSRETRDYA PPSRGHAYRDYGHSSRRDESY SRGYRNRSSR



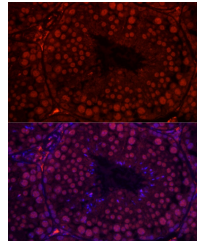
Immunohistochemistry analysis of paraffin-embedded human colon carcinoma using RBMY1A1 rabbit polyclonal antibody (STJ11100329) at dilution of 1:100 (40x lens). Perform high pressure antigen retrieval with 10 mM citrate buffer pH 6.0 before commencing with immunohistochemistry staining protocol.



Immunohistochemistry analysis of paraffin-embedded mouse lung using RBMY1A1 rabbit polyclonal antibody (STJ11100329) at dilution of 1:100 (40x lens). Perform high pressure antigen retrieval with 10 mM citrate buffer pH 6.0 before commencing with immunohistochemistry staining protocol.



Immunohistochemistry analysis of paraffin-embedded rat kidney using RBMY1A1 rabbit polyclonal antibody (STJ11100329) at dilution of 1:100 (40x lens). Perform high pressure antigen retrieval with 10 mM citrate buffer pH 6.0 before commencing with immunohistochemistry staining protocol.



Immunofluorescence analysis of mouse testis cells using RBMY1A1 rabbit polyclonal antibody (STJ11100329) at dilution of 1:100 (40x lens). Blue: DAPI for nuclear staining.

This product is suitable for in-vitro studies under the RESEARCH USE ONLY [RUO] licence. This product must not be used as for diagnostic or other medical purposes.  
St John's Laboratory Ltd, Knowledge Dock Business Centre, University Way, London, E16 2RD | Tel: 0208 223 3081