

Anti-ATP5G2 antibody (50-150) (STJ11100235)

STJ11100235

GENERAL INFORMATION

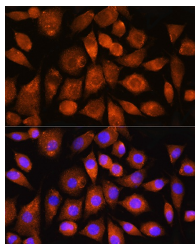
Product Type	Primary antibodies
Short Description	
Applications	WB/IF/IC/ELISA
Host/Source	Rabbit
Reactivity	Human/Mouse

PRODUCT PROPERTIES

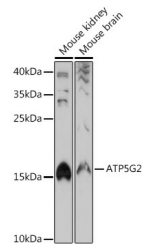
Clonality	Polyclonal
Clone ID	
Concentration	Lot specific
Conjugation	Unconjugated
Purification	Affinity purification
Dilution Range	WB:1:500-1:2000 IF/IC:1:50-1:200 ELISA:Recommended starting concentration is 1 Mu g/mL. Please optimize the concentration based on your specific assay requirements.
Formulation	PBS with 0.01% Thimerosal, 50% Glycerol, pH 7.3.
Isotype	IgG
Storage Instruction	Store at -20°C for up to 1 year from the date of receipt, and avoid repeat freeze-thaw cycles.

TARGET INFORMATION

Gene ID	517
Gene Symbol	ATP5MC2
Uniprot ID	AT5G2_HUMAN
Immunogen	
Immunogen Region	50-150
Specificity	A synthetic peptide corresponding to a sequence within amino acids 50-150 of human ATP5G2 (NP_001002031.1). ATAPHPLKMFACSKFVSTPS LVKSTSQLLSRPLSAVLKR PEILTDESLSSLAVSCPLTS LVSSRSFQTSISRDIIDTAA
Sequence	KFIGAGAATVGAGSGAGIG T



Immunofluorescence analysis of L929 cells using ATP5G2 Rabbit polyclonal antibody (STJ11100235) at dilution of 1:100. Secondary antibody: Cy3 Goat Anti-Rabbit IgG (H+L) at 1:500 dilution. Blue: DAPI for nuclear staining.



Western blot analysis of various lysates using ATP5G2 Rabbit polyclonal antibody (STJ11100235) at 1:1000 dilution. Secondary antibody: HRP Goat Anti-Rabbit IgG (H+L) (STJ5000656) at 1:10000 dilution. Lysates/proteins: 25 Mu g per lane. Blocking buffer: 3% nonfat dry milk in TBST. Detection: ECL Basic Kit. Exposure time: 90s.

This product is suitable for in-vitro studies under the RESEARCH USE ONLY [RUO] licence. This product must not be used as for diagnostic or other medical purposes.
St John's Laboratory Ltd, Knowledge Dock Business Centre, University Way, London, E16 2RD | Tel: 0208 223 3081