

Anti-RELA antibody (450-551) [S7MM] (STJ11100167)

STJ11100167

GENERAL INFORMATION

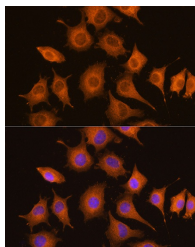
Product Type	Primary antibodies
Short Description	
Applications	WB/IF/ICC/ELISA
Host/Source	Mouse
Reactivity	Human/Mouse/Rat

PRODUCT PROPERTIES

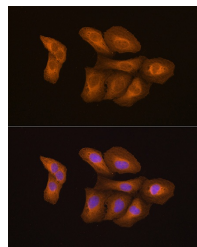
Clonality	Monoclonal
Clone ID	S7MM
Concentration	Lot specific
Conjugation	Unconjugated
Purification	Affinity purification
Dilution Range	WB:1:500-1:1000 IF/ICC:1:50-1:200 ELISA:Recommended starting concentration is 1 Mu g/mL. Please optimize the concentration based on your specific assay requirements.
Formulation	PBS with 0.05% Proclin300, 50% Glycerol, pH 7.3.
Isotype	IgG2bk
Storage Instruction	Store at -20°C for up to 1 year from the date of receipt, and avoid repeat freeze-thaw cycles.

TARGET INFORMATION

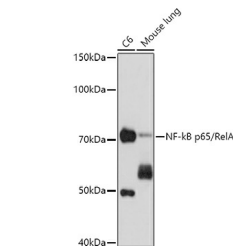
Gene ID	5970
Gene Symbol	RELA
Uniprot ID	TF65_HUMAN
Immunogen	
Immunogen Region	450-551
Specificity	A synthetic peptide corresponding to a sequence within amino acids 450-551 of human NF-kB p65/RelA (Q04206).
Immunogen Sequence	LGALLGNSTDPAVFTDLASV DNSEFQQLNQGIPVAPHTT EPMLMEYPEAITRLVTGAQR PPDPAAPLGAAPGLPNGLLS GDEDFSSIADMDFSALLSQI SS



Immunofluorescence analysis of L929 cells using NF-kB p65/RelA Mouse monoclonal antibody (STJ11100167) at dilution of 1:100. Blue: DAPI for nuclear staining.



Immunofluorescence analysis of U2OS cells using NF-kB p65/RelA Mouse monoclonal antibody (STJ11100167) at dilution of 1:100. Blue: DAPI for nuclear staining.



Western blot analysis of various lysates using NF-kB p65/RelA Mouse monoclonal antibody (STJ11100167) at 1:1000 dilution. Secondary antibody: HRP Goat Anti-Mouse IgG (H+L) at 1:10000 dilution. Lysates/proteins: 25 Mu g per lane. Blocking buffer: 3% nonfat dry milk in TBST. Detection: ECL Basic Kit. Exposure time: 90s.