

Anti-S1PR2 antibody (250-353) (STJ11100163)
STJ11100163

GENERAL INFORMATION

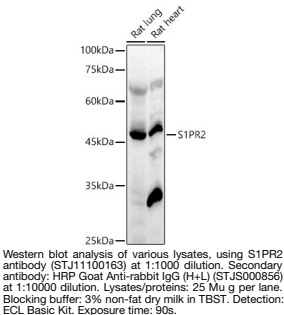
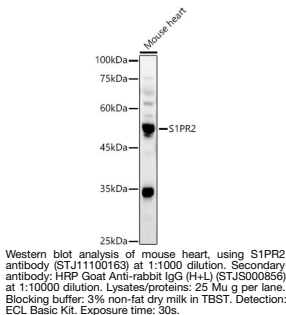
Product Type	Primary antibodies
Short Description	
Applications	WB/ELISA
Host/Source	Rabbit
Reactivity	Mouse/Rat

PRODUCT PROPERTIES

Clonality	Polyclonal
Clone ID	
Concentration	Lot specific
Conjugation	Unconjugated
Purification	Affinity purification
Dilution Range	WB:1:500-1:1000 ELISA:Recommended starting concentration is 1 Mu g/mL. Please optimize the concentration based on your specific assay requirements.
Formulation	PBS with 0.05% Proclin300, 50% Glycerol, pH 7.3.
Isotype	IgG
Storage Instruction	Store at -20°C for up to 1 year from the date of receipt, and avoid repeat freeze-thaw cycles.

TARGET INFORMATION

Gene ID	9294
Gene Symbol	S1PR2
Uniprot ID	S1PR2_HUMAN
Immunogen	
Immunogen Region	250-353
Specificity	A synthetic peptide corresponding to a sequence within amino acids 250-353 of human S1PR2 (NP_004221.3).
Immunogen Sequence	FSILLDDYACPVHSCPILYK AHYFFAVSTLNSLLNPVIYT WRSRDLRREVLRLPLQCWRPG VGVQGRRRGGTSGHLLPLR SSSSLERGMHMTSPTFLEG NTVV



This product is suitable for in-vitro studies under the RESEARCH USE ONLY [RUO] licence. This product must not be used as for diagnostic or other medical purposes.
St John's Laboratory Ltd, Knowledge Dock Business Centre, University Way, London, E16 2RD | Tel: 0208 223 3081