

Anti-CFAP61 antibody (1-100) (STJ11100153)

STJ11100153

GENERAL INFORMATION

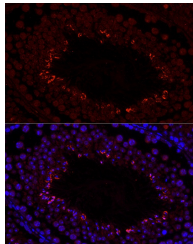
Product Type	Primary antibodies
Short Description	
Applications	WB/IHC-P/IF/CC/ELISA
Host/Source	Rabbit
Reactivity	Human/Mouse

PRODUCT PROPERTIES

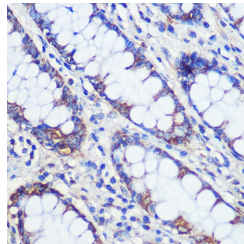
Clonality	Polyclonal
Clone ID	
Concentration	Lot specific
Conjugation	Unconjugated
Purification	Affinity purification
Dilution Range	WB:1:500-1:2000 IHC-P:1:50-1:200 IF/CC:1:50-1:200 ELISA:Recommended starting concentration is 1 µg/mL. Please optimize the concentration based on your specific assay requirements.
Formulation	PBS with 0.01% Thimerosal, 50% Glycerol, pH 7.3.
Isotype	IgG
Storage Instruction	Store at -20°C for up to 1 year from the date of receipt, and avoid repeat freeze-thaw cycles.

TARGET INFORMATION

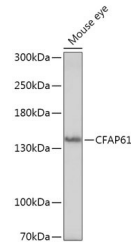
Gene ID	26074
Gene Symbol	CFAP61
Uniprot ID	CFA61_HUMAN
Immunogen	
Immunogen Region	1-100
Specificity	A synthetic peptide corresponding to a sequence within amino acids 1-100 of human CFAP61 (NP_056400.3).
Immunogen Sequence	MSVLSPRGKVEVHCRRTESQDVYCIKSLIRKFTCKLFGKLNIIYLLEKANLAVTLCNDKEEIMAAQATFLDYPNWNVAKQDDWVSVFRELDSIPCTPL



Immunofluorescence analysis of paraffin-embedded mouse testis using CFAP61 Rabbit polyclonal antibody (STJ11100153) at dilution of 1:100 (40x lens). Secondary antibody: Cy3 Goat Anti-Rabbit IgG (H+L) at 1:500 dilution. Blue: DAPI for nuclear staining.



Immunohistochemistry analysis of CFAP61 in paraffin-embedded Human colon using CFAP61 Rabbit polyclonal antibody (STJ11100153) at dilution of 1:100 (40x lens). Perform microwave antigen retrieval with 10 mM PBS buffer pH 7.2 before commencing with immunohistochemistry staining protocol.



Western blot analysis of lysates from Mouse eye, using CFAP61 Rabbit polyclonal antibody (STJ11100153) at 1:1000 dilution. Secondary antibody: HRP Goat Anti-Rabbit IgG (H+L) (STJ5000856) at 1:10000 dilution. Lysates/proteins: 25 µg per lane. Blocking buffer: 3% nonfat dry milk in TBST. Detection: ECL Basic Kit. Exposure time: 3min.