

Anti-PML antibody (571-611) (STJ11100142)

STJ11100142

GENERAL INFORMATION

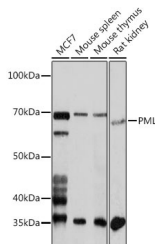
Product Type	Primary antibodies
Short Description	
Applications	WB/IHC-P/ELISA
Host/Source	Rabbit
Reactivity	Human/Mouse/Rat

PRODUCT PROPERTIES

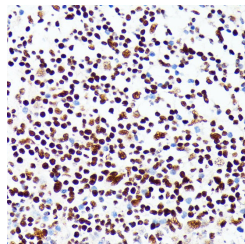
Clonality	Polyclonal
Clone ID	
Concentration	Lot specific
Conjugation	Unconjugated
Purification	Affinity purification
Dilution Range	WB:1:500-1:2000 IHC-P:1:50-1:200 ELISA:Recommended starting concentration is 1 Mu g/mL. Please optimize the concentration based on your specific assay requirements.
Formulation	PBS with 0.02% Sodium Azide, 50% Glycerol, pH 7.3.
Isotype	IgG
Storage Instruction	Store at -20°C for up to 1 year from the date of receipt, and avoid repeat freeze-thaw cycles.

TARGET INFORMATION

Gene ID	5371
Gene Symbol	PML
Uniprot ID	PML_HUMAN
Immunogen	
Immunogen Region	571-611
Specificity	Recombinant fusion protein containing a sequence corresponding to amino acids 571-611 of human PML (NP_150241.2).
Immunogen Sequence	SSRELEDDSSSESSDLQLEGP STLRVLDENLADPQAEDRPL V



Western blot analysis of extracts of various cell lines, using PML antibody (STJ11100142) at 1:1000 dilution. Secondary antibody: HRP Goat Anti-rabbit IgG (H+L) (STJS000856) at 1:10000 dilution. Lysates/proteins: 25 Mu g per lane. Blocking buffer: 3% non-fat dry milk in TBST. Detection: ECL Enhanced Kit. Exposure time: 3min.



Immunohistochemistry analysis of paraffin-embedded human appendix using PML antibody (STJ11100142) at dilution of 1:100 (40x lens). Perform microwave antigen retrieval with 10 mM PBS buffer pH 7.2 before commencing with immunohistochemistry staining protocol.

This product is suitable for in-vitro studies under the RESEARCH USE ONLY [RUO] licence. This product must not be used as for diagnostic or other medical purposes.
St John's Laboratory Ltd, Knowledge Dock Business Centre, University Way, London, E16 2RD | Tel: 0208 223 3081