

Anti-ATF5 antibody (101-282) (STJ11100125)

STJ11100125

GENERAL INFORMATION

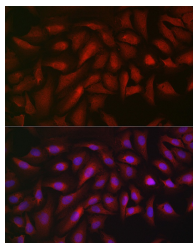
Product Type	Primary antibodies
Short Description	
Applications	WB/IHC-P/IF/ICC/ELISA
Host/Source	Rabbit
Reactivity	Human/Mouse/Rat

PRODUCT PROPERTIES

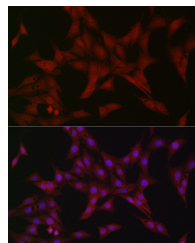
Clonality	Polyclonal
Clone ID	
Concentration	Lot specific
Conjugation	Unconjugated
Purification	Affinity purification
Dilution	WB:1:500-1:2000
Range	IHC-P:1:50-1:200 IF/ICC:1:50-1:200 ELISA:Recommended starting concentration is 1 μ g/mL. Please optimize the concentration based on your specific assay requirements.
Formulation	PBS with 0.05% Proclin300, 50% Glycerol, pH 7.3.
Isotype	IgG
Storage	Store at -20°C for up to 1 year from the date of receipt, and avoid repeat freeze-thaw cycles.
Instruction	

TARGET INFORMATION

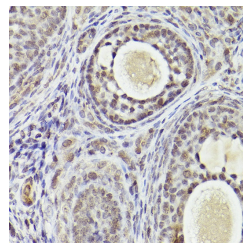
Gene ID	22809
Gene Symbol	ATF5
Uniprot ID	ATF5_HUMAN
Immunogen	
Region	101-282
Specificity	Recombinant fusion protein containing a sequence corresponding to amino acids 101-282 of human ATF5 (NP_036200.2).
Immunogen	MASLLKKELEQMEDFFLDAP PLPPSPPLPPPLPPAPS LPLSLPSFDLPQPPVLDLTD LLAIYCRNEAGQEEVGMPPPL
Sequence	PPQPPPPSPPPQPSRLAPY PHPATTRGDRKQKKRDQNKS AALRYRQRKRAEGEAGEGEC QGLEARNRELKERAESVERE IQYVKDLLIEVYKARSQRTR SC



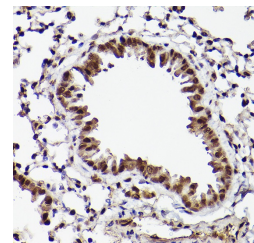
Immunofluorescence analysis of U2OS cells using ATF5 Rabbit polyclonal antibody (STJ11100125) at dilution of 1:20 (40x lens). Blue: DAPI for nuclear staining.



Immunofluorescence analysis of PC-12 cells using ATF5 Rabbit polyclonal antibody (STJ11100125) at dilution of 1:20 (40x lens). Blue: DAPI for nuclear staining.



Immunohistochemistry analysis of paraffin-embedded rat ovary using ATF5 Rabbit polyclonal antibody (STJ11100125) at dilution of 1:20 (40x lens). Perform high pressure antigen retrieval with 10 mM citrate buffer pH 6.0 before commencing with immunohistochemistry staining protocol.



Immunohistochemistry analysis of paraffin-embedded mouse lung using ATF5 Rabbit polyclonal antibody (STJ11100125) at dilution of 1:20 (40x lens). Perform high pressure antigen retrieval with 10 mM citrate buffer pH 6.0 before commencing with immunohistochemistry staining protocol.

This product is suitable for in-vitro studies under the RESEARCH USE ONLY [RUO] licence. This product must not be used as for diagnostic or other medical purposes.
St John's Laboratory Ltd, Knowledge Dock Business Centre, University Way, London, E16 2RD | Tel: 0208 223 3081