

Anti-RXRB antibody (283-298) (STJ11100090)

STJ11100090

GENERAL INFORMATION

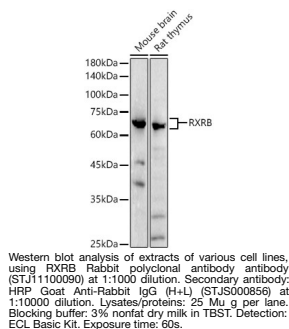
Product Type	Primary antibodies
Short Description	
Applications	WB/ELISA
Host/Source	Rabbit
Reactivity	Human/Mouse/Rat

PRODUCT PROPERTIES

Clonality	Polyclonal
Clone ID	
Concentration	Lot specific
Conjugation	Unconjugated
Purification	Affinity purification
Dilution	WB:1:500-1:1000
Range	ELISA:Recommended starting concentration is 1 Mu g/mL. Please optimize the concentration based on your specific assay requirements.
Formulation	PBS with 0.05% Proclin300, 50% Glycerol, pH 7.3.
Isotype	IgG
Storage	Store at -20°C for up to 1 year from the date of receipt, and avoid repeat freeze-thaw cycles.
Instruction	

TARGET INFORMATION

Gene ID	6257
Gene Symbol	RXRB
Uniprot ID	RXRB_HUMAN
Immunogen	
Immunogen Region	283-298
Specificity	A synthetic peptide corresponding to a sequence within amino acids 200-300 of human RXRB (NP_001257330.1). AGKRLCAICGDRSSGKHYGV YSCEGCKGFFKRTIRKDLTY SCRDNKDCTVDKRQRNRCQY CRYQKCLATGMKREAVQEER
Immunogen Sequence	QRGKDKDGDGEGAGGAPEEM PVDRILEAEAVEQKSDQGV EGPGGTGGSGSSPNDPVTNI CQAADKQLFTLVEWAKRIPH FSSLPLDDQVILLRAGWNEL LIASFHSRSDVRDGILLAT GLHVHRNSAHSAGVGAIFDR VLTELVSKMRDMRMDKTEL



This product is suitable for in-vitro studies under the RESEARCH USE ONLY [RUO] licence. This product must not be used as for diagnostic or other medical purposes.
St John's Laboratory Ltd, Knowledge Dock Business Centre, University Way, London, E16 2RD | Tel: 0208 223 3081