

## Anti-MYL6B antibody (1-208) (STJ11100075)

STJ11100075

### GENERAL INFORMATION

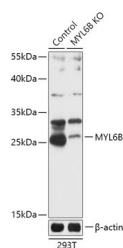
<b>Product Type</b>	Primary antibodies
<b>Short Description</b>	
<b>Applications</b>	WB/ELISA
<b>Host/Source</b>	Rabbit
<b>Reactivity</b>	Human/Mouse/Rat

### PRODUCT PROPERTIES

<b>Clonality</b>	Polyclonal
<b>Clone ID</b>	
<b>Concentration</b>	Lot specific
<b>Conjugation</b>	Unconjugated
<b>Purification</b>	Affinity purification
<b>Dilution</b>	WB:1:200-1:500
<b>Range</b>	ELISA:Recommended starting concentration is 1 µg/mL. Please optimize the concentration based on your specific assay requirements.
<b>Formulation</b>	PBS with 0.01% Thimerosal, 50% Glycerol, pH 7.3.
<b>Isotype</b>	IgG
<b>Storage</b>	Store at -20°C for up to 1 year from the date of receipt, and avoid repeat freeze-thaw cycles.
<b>Instruction</b>	

### TARGET INFORMATION

<b>Gene ID</b>	140465
<b>Gene Symbol</b>	MYL6B
<b>Uniprot ID</b>	MYL6B_HUMAN
<b>Immunogen</b>	
<b>Immunogen Region</b>	1-208
<b>Specificity</b>	Recombinant fusion protein containing a sequence corresponding to amino acids 1-208 of human MYL6B (NP_002466.1).
<b>Immunogen Sequence</b>	MPPKKDVPVKPKPAGPSISK AAKPAAAGAPPAKTKAEPV PQAPQKTQEPPVDLSKVIE FNKDQLEEFKEAFELFDRVG DGKILYSQCGDVMRALGQNP TNAEVLKVLGNPKSDELKSR RVDFTFLPMLQAVAKNRGQ GTYEDYLEGFRVFDKEGNGK VMGAELRHVLTTLGKMTTE EVETVLAGHEDSNGCINYEY FLKHILSV



Western blot analysis of lysates from wild type (WT) and MYL6B knockout (KO) 293T cells, using [KO Validated] MYL6B Rabbit polyclonal antibody (STJ11100075) at 1:1000 dilution. Secondary antibody: HRP Goat Anti-Rabbit IgG (H+L) (STJS000856) at 1:10000 dilution. Lysates/proteins: 25 µg per lane. Blocking buffer: 3% nonfat dry milk in TBST. Detection: ECL Basic Kit. Exposure time: 10s.

This product is suitable for in-vitro studies under the RESEARCH USE ONLY [RUO] licence. This product must not be used as for diagnostic or other medical purposes.  
St John's Laboratory Ltd, Knowledge Dock Business Centre, University Way, London, E16 2RD | Tel: 0208 223 3081