

Anti-UBE2C antibody (1-179) (STJ11100048)

STJ11100048

GENERAL INFORMATION

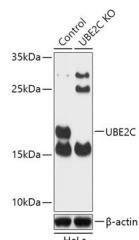
Product Type	Primary antibodies
Short Description	
Applications	WB/IF/ICC/ELISA
Host/Source	Rabbit
Reactivity	Human

PRODUCT PROPERTIES

Clonality	Polyclonal
Clone ID	
Concentration	Lot specific
Conjugation	Unconjugated
Purification	Affinity purification
Dilution	WB:1:500-1:2000
Range	IF/ICC:1:50-1:100 ELISA:Recommended starting concentration is 1 Mu g/mL. Please optimize the concentration based on your specific assay requirements.
Formulation	PBS with 0.01% Thimerosal, 50% Glycerol, pH 7.3.
Isotype	IgG
Storage Instruction	Store at -20°C for up to 1 year from the date of receipt, and avoid repeat freeze-thaw cycles.

TARGET INFORMATION

Gene ID	11065
Gene Symbol	UBE2C
Uniprot ID	UBE2C_HUMAN
Immunogen	
Immunogen Region	1-179
Specificity	Recombinant fusion protein containing a sequence corresponding to amino acids 1-179 of human UBE2C (NP_008950.1).
Immunogen Sequence	MASQNRDPAATSVAAARKGA EPSGGAARGPVGKRLQQLM TLMMSGDKGISAFPESDNLF KVVGTIHGAAGTVYEDLRYK LSLEFPGYPYNAPT VKFLT PCYHPNVD TQGNICLDILKE KWSALYDVRTILLSIQSLG EPNIDSPLNTHAAELWKNPT AFKKYLQETYSKQVTSQEP



Western blot analysis of lysates from wild type (WT) and UBE2C knockout (KO) HeLa cells, using [KO Validated] UBE2C Rabbit polyclonal antibody (STJ11100048) at 1:1000 dilution. Secondary antibody: HRP Goat Anti-Rabbit IgG (H+L) (STJS000859) at 1:10000 dilution. Lysates/proteins: 25 Mu g per lane. Blocking buffer: 3% nonfat dry milk in TBST. Detection: ECL Basic Kit. Exposure time: 90s.

This product is suitable for in-vitro studies under the RESEARCH USE ONLY [RUO] licence. This product must not be used as for diagnostic or other medical purposes.
St John's Laboratory Ltd, Knowledge Dock Business Centre, University Way, London, E16 2RD | Tel: 0208 223 3081