

Anti-MAP3K1 antibody (1400-1512) (STJ11100014)

STJ11100014

GENERAL INFORMATION

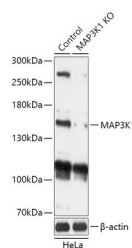
Product Type	Primary antibodies
Short Description	
Applications	WB/IHC-P/ELISA
Host/Source	Rabbit
Reactivity	Human/Mouse/Rat

PRODUCT PROPERTIES

Clonality	Polyclonal
Clone ID	
Concentration	Lot specific
Conjugation	Unconjugated
Purification	Affinity purification
Dilution Range	WB:1:500-1:2000 IHC-P:1:50-1:200 ELISA:Recommended starting concentration is 1 µg/mL. Please optimize the concentration based on your specific assay requirements.
Formulation	PBS with 0.01% Thimerosal, 50% Glycerol, pH 7.3.
Isotype	IgG
Storage Instruction	Store at -20°C for up to 1 year from the date of receipt, and avoid repeat freeze-thaw cycles.

TARGET INFORMATION

Gene ID	4214
Gene Symbol	MAP3K1
Uniprot ID	M3K1_HUMAN
Immunogen	
Immunogen Region	1400-1512
Specificity	A synthetic peptide corresponding to a sequence within amino acids 1400-1512 of human MAP3K1 (NP_005912.1).
Immunogen Sequence	TGAGEFQGQLLGTIAFMAPE VLRGQQYGRSCDWWSVGCAI IEMACAKPPWNAEKHSNHLA LIFKIASATTAPSIPSHLSP GLRDVALRCLQLPQDRPPS RELKHPVFRTTW



Western blot analysis of lysates from wild type (WT) and MAP3K1 knockout (KO) HeLa cells, using [KO Validated] MAP3K1 Rabbit polyclonal antibody (STJ11100014) at 1:1000 dilution. Secondary antibody: HRP-Goat Anti-Rabbit IgG (H+L) (STJ5000856) at 1:10000 dilution. Lysates/proteins: 25 µg per lane. Blocking buffer: 3% nonfat dry milk in TBST. Detection: ECL Basic Kit. Exposure time: 1min.

This product is suitable for in-vitro studies under the RESEARCH USE ONLY [RUO] licence. This product must not be used as for diagnostic or other medical purposes.
St John's Laboratory Ltd, Knowledge Dock Business Centre, University Way, London, E16 2RD | Tel: 0208 223 3081