

Anti-TRIM21 antibody (80-330) (STJ11100000)

STJ11100000

GENERAL INFORMATION

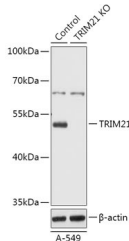
Product Type	Primary antibodies
Short Description	
Applications	WB/IF/ICC/ELISA
Host/Source	Rabbit
Reactivity	Human/Mouse/Rat

PRODUCT PROPERTIES

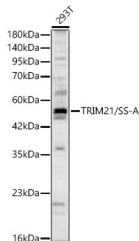
Clonality	Polyclonal
Clone ID	
Concentration	Lot specific
Conjugation	Unconjugated
Purification	Affinity purification
Dilution	WB: 1:500-1:2000
Range	IF/ICC: 1:50-1:200 ELISA: Recommended starting concentration is 1 µg/mL. Please optimize the concentration based on your specific assay requirements.
Formulation	PBS with 0.05% Proclin300, 50% Glycerol, pH 7.3.
Isotype	IgG
Storage Instruction	Store at -20°C for up to 1 year from the date of receipt, and avoid repeat freeze-thaw cycles.

TARGET INFORMATION

Gene ID	6737
Gene Symbol	TRIM21
Uniprot ID	RO52_HUMAN
Immunogen	
Immunogen Region	80-330
Specificity	Recombinant fusion protein containing a sequence corresponding to amino acids 80-330 of human TRIM21/SS-A (NP_003132.2).
Immunogen Sequence	SQEARGTQGERCAVHGERL HLFCEKDGKALCWVCAQSRK HRDHAMVPLEEAAQEYQEKL QVALGELRRKQELAEKLEVE IAIKRADWKKTVETQKSRIH AEFVQQKNFLVEEEQRLQE LEKDEREQLRILGEKEAKLA QQSQALQELISELDRRCHSS ALELLQVEIIVLSESWNL KDLDTSPELRSVCHVPGLK KMLRTCVAHITLDPDTANPW LILSEDRRQVRLGDTQQSI



Western blot analysis of extracts from normal (control) and TRIM21/SS-A knockout (KO) A-549 cells, using TRIM21/SS-A antibody (STJ11100000) at 1:1000 dilution. Secondary antibody: HRP Goat Anti-rabbit IgG (H+L) (STJS000856) at 1:10000 dilution. Lysates/proteins: 25 µg per lane. Blocking buffer: 3% non-fat dry milk in TBST. Detection: ECL Basic Kit. Exposure time: 1s.



Western blot analysis of 293T, using TRIM21/SS-A rabbit polyclonal antibody (STJ11100000) at 1:2000 dilution. Secondary antibody: HRP Goat Anti-rabbit IgG (H+L) (STJS000856) at 1:10000 dilution. Lysates/proteins: 25 µg per lane. Blocking buffer: 3% non-fat dry milk in TBST. Detection: ECL Basic Kit. Exposure time: 90s.

This product is suitable for in-vitro studies under the RESEARCH USE ONLY [RUO] licence. This product must not be used as for diagnostic or other medical purposes.
St John's Laboratory Ltd, Knowledge Dock Business Centre, University Way, London, E16 2RD | Tel: 0208 223 3081