

Anti-Phospho-RELA-S276 antibody (STJ110827)

GENERAL INFORMATION

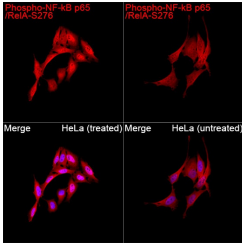
Product Type	Primary antibodies
Short Description	
Applications	WB/IHC-P/IF/ICC/ELISA
Host/Source	Rabbit
Reactivity	Human/Mouse/Rat

PRODUCT PROPERTIES

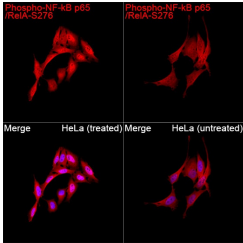
Clonality	Polyclonal
Clone ID	
Concentration	Lot specific
Conjugation	Unconjugated
Purification	Affinity purification
Dilution Range	WB:1:100-1:500 IHC-P:1:100-1:500 IF/ICC:1:50-1:200 ELISA:Recommended starting concentration is 1 µg/mL. Please optimize the concentration based on your specific assay requirements.
Formulation	PBS with 0.05% Proclin300, 50% Glycerol, pH 7.3.
Isotype	IgG
Storage Instruction	Store at -20°C for up to 1 year from the date of receipt, and avoid repeat freeze-thaw cycles.

TARGET INFORMATION

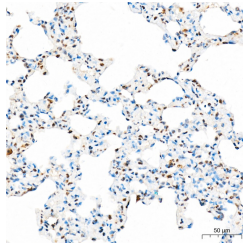
Gene ID	5970
Gene Symbol	RELA
Uniprot ID	TF65_HUMAN
Immunogen	RPSDR
Immunogen Region	
Specificity	A synthetic phosphorylated peptide around S276 of human RelA (NP_068810.3).
Immunogen Sequence	RPSDR



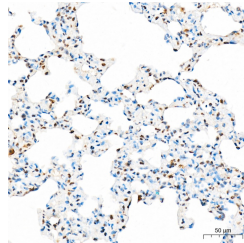
Western blot analysis of extracts of various cell lines, using Phospho-NF- κ B p65/RelA-S276 antibody (STJ110827) at 1:1000 dilution. HeLa cells, NIH/3T3 cells and C6 cells were treated by TNF-Alpha (20 ng/ml) at 37 °C for 30 minutes. HeLa cells were treated by Calyculin A (100 nM) at 37 °C for 30 minutes after serum-starvation overnight. Secondary antibody: HRP Goat Anti-rabbit IgG (H+L) at 1:10000 dilution. Lysates/proteins: 25µg per lane. Blocking buffer: 3% non-fat dry milk in TBST. Detection: ECL Basic Kit. Exposure time: 180s.



Immunofluorescence analysis of HeLa cells (treated with CA) and HeLa cells (untreated) using Phospho-NF- κ B p65/RelA-S276 Rabbit polyclonal antibody (STJ110827) at a dilution of 1:100 (40x lens). Secondary antibody: Cy3-conjugated Goat anti-Rabbit IgG (H+L) at 1:500 dilution. Blue: DAPI for nuclear staining.



Immunofluorescence analysis of U2OS cells using Phospho-NF- κ B p65/RelA-S276 antibody (STJ110827) at dilution of 1:100. Blue: DAPI for nuclear staining.



Immunohistochemistry analysis of Phospho-NF- κ B p65/RelA-S276 in paraffin-embedded Rat lung tissue using Phospho-NF- κ B p65/RelA-S276 Rabbit polyclonal antibody (STJ110827) at a dilution of 1:500 (40x lens). High pressure antigen retrieval performed with 0.01M Citrate Buffer (pH 6.0) prior to immunohistochemistry staining.

This product is suitable for in-vitro studies under the RESEARCH USE ONLY [RUO] licence. This product must not be used as for diagnostic or other medical purposes.
St John's Laboratory Ltd, Knowledge Dock Business Centre, University Way, London, E16 2RD | Tel: 0208 223 3081