

Anti-ATG2B antibody (1360-1600) (STJ110796)
STJ110796

GENERAL INFORMATION

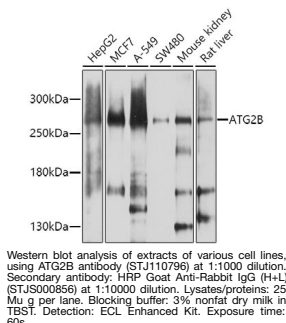
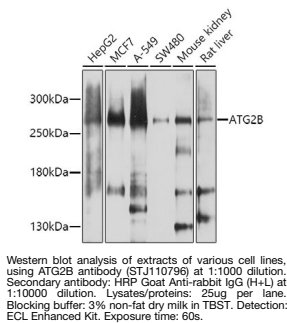
Product Type	Primary antibodies
Short Description	
Applications	WB/ELISA
Host/Source	Rabbit
Reactivity	Human/Mouse/Rat

PRODUCT PROPERTIES

Clonality	Polyclonal
Clone ID	
Concentration	Lot specific
Conjugation	Unconjugated
Purification	Affinity purification
Dilution	WB:1:500-1:1000
Range	ELISA:Recommended starting concentration is 1 Mu g/mL. Please optimize the concentration based on your specific assay requirements.
Formulation	PBS with 0.02% Sodium Azide, 50% Glycerol, pH 7.3.
Isotype	IgG
Storage	Store at -20°C for up to 1 year from the date of receipt, and avoid repeat freeze-thaw cycles.
Instruction	

TARGET INFORMATION

Gene ID	55102
Gene Symbol	ATG2B
Uniprot ID	ATG2B_HUMAN
Immunogen	
Immunogen Region	1360-1600
Specificity	Recombinant fusion protein containing a sequence corresponding to amino acids 1360-1600 of human ATG2B (NP_060506.5). IQYIASYGDLQTPNKADMKP GAFQRRSKVDSSGRSSSRGP VLPEADQQMLRDLMSDAMEE IDMQQGTSSVKPOANGVLDE
Immunogen Sequence	KSQIQEPCCSDLFLFPDESG NVSQESGPTYASFHHFISD AMTGVPTENDDFCILFAPKA AMQEKEEPEVKIMVDDAIV IRDNYFSLPVNKTDTSKAPL HFPIPVIRYVVKEVSLVWHL YGGKDFGTVPPTSPAKSYIS PHSSPSHTPTRHGRNTVCG



This product is suitable for in-vitro studies under the RESEARCH USE ONLY [RUO] licence. This product must not be used as for diagnostic or other medical purposes.
St John's Laboratory Ltd, Knowledge Dock Business Centre, University Way, London, E16 2RD | Tel: 0208 223 3081