

## Anti-FAM20A antibody (140-240) (STJ110794)

STJ110794

### GENERAL INFORMATION

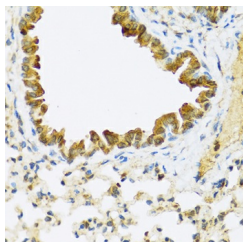
|                          |                    |
|--------------------------|--------------------|
| <b>Product Type</b>      | Primary antibodies |
| <b>Short Description</b> |                    |
| <b>Applications</b>      | WB/IHC-P/ELISA     |
| <b>Host/Source</b>       | Rabbit             |
| <b>Reactivity</b>        | Human/Mouse/Rat    |

### PRODUCT PROPERTIES

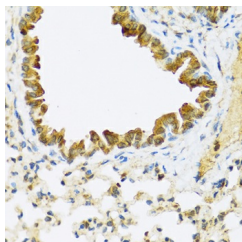
|                       |   |
|-----------------------|---|
| <b>Clonality</b>      | Polyclonal  |
| <b>Clone ID</b>       |   |
| <b>Concentration</b>  | Lot specific  |
| <b>Conjugation</b>    | Unconjugated  |
| <b>Purification</b>   | Affinity purification   |
| <b>Dilution Range</b> | WB:1:500-1:2000<br>IHC-P:1:100-1:200<br>ELISA:Recommended starting concentration is 1 µg/mL. Please optimize the concentration based on your specific assay requirements. |
| <b>Formulation</b>    | PBS with 0.02% Sodium Azide, 50% Glycerol, pH 7.3.  |
| <b>Isotype</b>        | IgG   |
| <b>Storage</b>        | Store at -20°C for up to 1 year from the date of receipt, and avoid repeat freeze-thaw cycles.  |
| <b>Instruction</b>    |   |

### TARGET INFORMATION

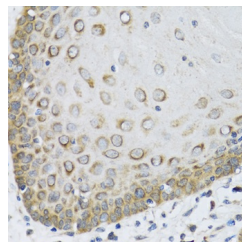
|                           |  |
|---------------------------|--|
| <b>Gene ID</b>            | 54757  |
| <b>Gene Symbol</b>        | FAM20A   |
| <b>Uniprot ID</b>         | FA20A_HUMAN  |
| <b>Immunogen</b>          |  |
| <b>Immunogen Region</b>   | 140-240  |
| <b>Specificity</b>        | Recombinant fusion protein containing a sequence corresponding to amino acids 140-240 of human FAM20A (NP_060035.2). |
| <b>Immunogen Sequence</b> | YREQMNLTSLDPLQLRLEA SWQFHLGINRHGLYSRSP VSKLLQDMRHFPTISADYS QDEKALLGACDCTQIVKPSG VHLKLVLRFSDFGKAMFKPM R               |



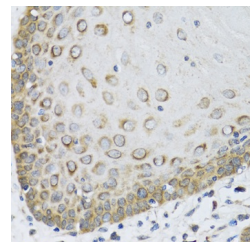
Western blot analysis of extracts of various cell lines, using FAM20A antibody (STJ110794) at 1:1000 dilution. Secondary antibody: HRP Goat Anti-rabbit IgG (H+L) at 1:10000 dilution. Lysates/proteins: 25µg per lane. Blocking buffer: 3% non-fat dry milk in TBST. Detection: ECL Basic Kit. Exposure time: 5s.



Immunohistochemistry analysis of paraffin-embedded mouse lung using FAM20A antibody (STJ110794) at dilution of 1:100 (40x lens). Perform microwave antigen retrieval with 10 mM PBS buffer pH 7. 2 before commencing with immunohistochemistry staining protocol.



Immunohistochemistry of paraffin-embedded rat lung using FAM20A antibody (STJ110794) at dilution of 1:100 (40x lens).



Immunohistochemistry analysis of paraffin-embedded human esophagus using FAM20A antibody (STJ110794) at dilution of 1:100 (40x lens). Perform microwave antigen retrieval with 10 mM PBS buffer pH 7. 2 before commencing with immunohistochemistry staining protocol.

This product is suitable for in-vitro studies under the RESEARCH USE ONLY [RUO] licence. This product must not be used as for diagnostic or other medical purposes.  
St John's Laboratory Ltd, Knowledge Dock Business Centre, University Way, London, E16 2RD | Tel: 0208 223 3081