

Anti-INADL antibody (450-680) (STJ110774)

STJ110774

GENERAL INFORMATION

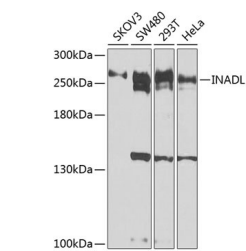
Product Type	Primary antibodies
Short Description	
Applications	WB/ELISA
Host/Source	Rabbit
Reactivity	Human/Mouse

PRODUCT PROPERTIES

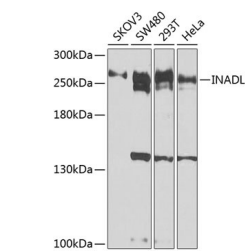
Clonality	Polyclonal
Clone ID	
Concentration	Lot specific
Conjugation	Unconjugated
Purification	Affinity purification
Dilution	WB:1:500-1:2000
Range	ELISA:Recommended starting concentration is 1 μ g/mL. Please optimize the concentration based on your specific assay requirements.
Formulation	PBS with 0.09% Sodium Azide, 50% Glycerol, pH 7.3.
Isotype	IgG
Storage	Store at -20°C for up to 1 year from the date of receipt, and avoid repeat freeze-thaw cycles.
Instruction	

TARGET INFORMATION

Gene ID	
Gene Symbol	PATJ
Uniprot ID	INADL_HUMAN
Immunogen	
Immunogen Region	450-680
Specificity	A synthetic peptide corresponding to a sequence within amino acids 450-680 of human INADL (NP_795352.2). VRRKTSSTSPLEPPSDRGT VVEPLKPPALFLTGAETET NVDGEDEEIKERIDTLKNDN IQALEKLEKVPDSPENELKS RWENLLGPDYEVMTLDTQ IADDAELQKYSKLLPIHTLR LGVEVDSFDGHHYISSIVSG GPVDTLGLLQPEDELLEVNG MQLYGKSRREAVSFLKEVPP PFTLVCCRLLFDDEASVDEP RRTETSLPETEVDHNMVDVNT EEDDDGELALW
Immunogen Sequence	



Western blot analysis of extracts of various cell lines, using INADL antibody (STJ110774) at 1:1000 dilution. Secondary antibody: HRP Goat Anti-Rabbit IgG (H+L) at 1:10000 dilution. Lysates/proteins: 25 μ g per lane. Blocking buffer: 3% non-fat dry milk in TBST. Detection: ECL Basic Kit. Exposure time: 10s.



Western blot analysis of extracts of various cell lines, using INADL antibody (STJ110774) at 1:1000 dilution. Secondary antibody: HRP Goat Anti-Rabbit IgG (H+L) (STJS000856) at 1:10000 dilution. Lysates/proteins: 25 μ g per lane. Blocking buffer: 3% nonfat dry milk in TBST. Detection: ECL Basic Kit. Exposure time: 10s.

This product is suitable for in-vitro studies under the RESEARCH USE ONLY [RUO] licence. This product must not be used as for diagnostic or other medical purposes.
St John's Laboratory Ltd, Knowledge Dock Business Centre, University Way, London, E16 2RD | Tel: 0208 223 3081