

Anti-F2RL3 antibody (20-150) (STJ110769)
STJ110769

GENERAL INFORMATION

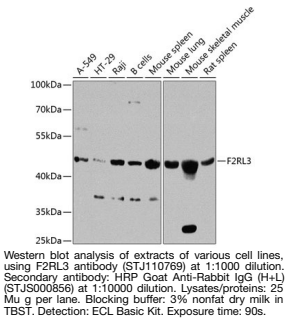
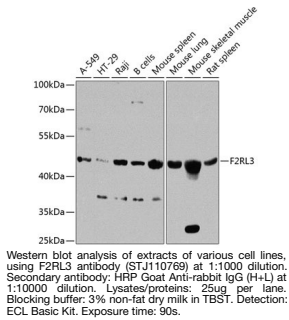
Product Type	Primary antibodies
Short Description	
Applications	WB/ELISA
Host/Source	Rabbit
Reactivity	Human/Mouse/Rat

PRODUCT PROPERTIES

Clonality	Polyclonal
Clone ID	
Concentration	Lot specific
Conjugation	Unconjugated
Purification	Affinity purification
Dilution Range	WB:1:500-1:2000 ELISA:Recommended starting concentration is 1 Mu g/mL. Please optimize the concentration based on your specific assay requirements.
Formulation	PBS with 0.02% Sodium Azide, 50% Glycerol, pH 7.3.
Isotype	IgG
Storage Instruction	Store at-20°C for up to 1 year from the date of receipt, and avoid repeat freeze-thaw cycles.

TARGET INFORMATION

Gene ID	9002
Gene Symbol	F2RL3
Uniprot ID	PAR4_HUMAN
Immunogen	
Immunogen Region	20-150
Specificity	Recombinant fusion protein containing a sequence corresponding to amino acids 20-150 of human F2RL3 (NP_003941.2).
Immunogen Sequence	TQTSPSVYDESGSTGGGDDST PSILPAPRGYPGQVCANDSD TLELPDSSRALLGWVPTRL VPALYGLVLVWGLPANGLAL WVLATQAPRLPSTMLLMNLA AADLLLALALPPRIAYHLRG QRWPFGEAACR



This product is suitable for in-vitro studies under the RESEARCH USE ONLY [RUO] licence. This product must not be used as for diagnostic or other medical purposes.
St John's Laboratory Ltd, Knowledge Dock Business Centre, University Way, London, E16 2RD | Tel: 0208 223 3081