

Anti-ABCB11 antibody (1050-1150) (STJ110765)

STJ110765

GENERAL INFORMATION

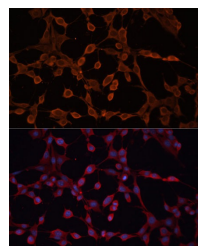
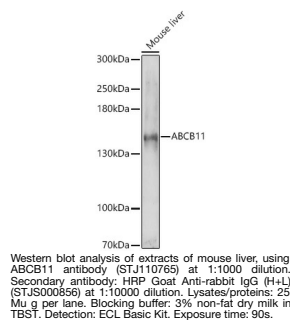
Product Type	Primary antibodies
Short Description	
Applications	WB/IF/ICC/ELISA
Host/Source	Rabbit
Reactivity	Human/Mouse/Rat

PRODUCT PROPERTIES

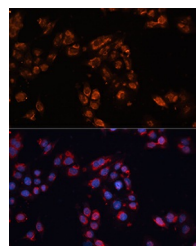
Clonality	Polyclonal
Clone ID	
Concentration	Lot specific
Conjugation	Unconjugated
Purification	Affinity purification
Dilution Range	WB:1:500-1:1000 IF/ICC:1:50-1:200 ELISA:Recommended starting concentration is 1 µg/mL. Please optimize the concentration based on your specific assay requirements.
Formulation	PBS with 0.09% Sodium Azide, 50% Glycerol, pH 7.3.
Isotype	IgG
Storage	Store at -20°C for up to 1 year from the date of receipt, and avoid repeat freeze-thaw cycles.
Instruction	

TARGET INFORMATION

Gene ID	8647
Gene Symbol	ABCB11
Uniprot ID	ABCB11_HUMAN
Immunogen	
Immunogen Region	1050-1150
Specificity	A synthetic peptide corresponding to a sequence within amino acids 1050-1150 of human ABCB11 (NP_003733.2).
Immunogen Sequence	RFFQLDRQPPISVYNTAGE KWDNFQGGKIDFVCKFTYPS RPDSQVLNGLSVSISPGQTL AFVGSSGCGKSTSIQLLERF YDPDQGGKVMIDGHDSKKVNV Q



Immunofluorescence analysis of NIH-3T3 cells using ABCB11 Polyclonal Antibody (STJ110765) at dilution of 1:100 (40x lens). Blue: DAPI for nuclear staining.



Immunofluorescence analysis of HeLa cells using ABCB11 antibody (STJ110765) at dilution of 1:100. Blue: DAPI for nuclear staining.