

Anti-HIRA antibody (250-550) (STJ110759)

STJ110759

GENERAL INFORMATION

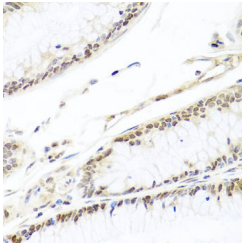
Product Type	Primary antibodies
Short Description	
Applications	WB/IHC-P/ELISA
Host/Source	Rabbit
Reactivity	Human

PRODUCT PROPERTIES

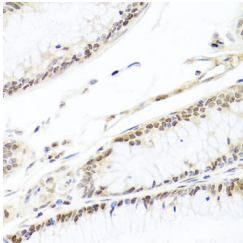
Clonality	Polyclonal
Clone ID	
Concentration	Lot specific
Conjugation	Unconjugated
Purification	Affinity purification
Dilution	WB: 1:500-1:2000
Range	IHC-P: 1:100-1:200 ELISA: Recommended starting concentration is 1 µg/mL. Please optimize the concentration based on your specific assay requirements.
Formulation	PBS with 0.02% Sodium Azide, 50% Glycerol, pH 7.3.
Isotype	IgG
Storage Instruction	Store at -20°C for up to 1 year from the date of receipt, and avoid repeat freeze-thaw cycles.

TARGET INFORMATION

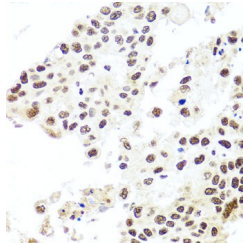
Gene ID	7290
Gene Symbol	HIRA
Uniprot ID	HIRA_HUMAN
Immunogen	
Immunogen Region	250-550
Specificity	Recombinant fusion protein containing a sequence corresponding to amino acids 250-550 of human HIRA (NP_003316.3).
Immunogen Sequence	AQIIEREGWKTNDVFGHRK AVTVVKFNPKIFKKKQKNGS SAKPSCPYCCCAVGSKDRSL SVWLTCLKRPLVVIHFLFDK SIMDISWTLNGLGILVCSMD GSAFLDFSQDELGDPLSEE EKSRIHQSTYGKSLAIMTEA QLSTAVIENPEMLKYQRRQQ QQQLDQKSAATREMGSAATSV AGVVGESLEDIRKLLKKQ VETRTADGRRRITPLCIAQL DTGDFSTAFFNSIPLSGSL



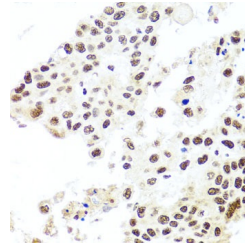
Western blot analysis of extracts of various cell lines, using HIRA antibody (STJ110759) at 1:1000 dilution. Secondary antibody: HRP Goat Anti-rabbit IgG (H+L) at 1:10000 dilution. Lysates/proteins: 25µg per lane. Blocking buffer: 3% non-fat dry milk in TBST. Detection: ECL Basic Kit. Exposure time: 10s.



Immunohistochemistry analysis of HIRA in paraffin-embedded human colon carcinoma using [KO Validated] HIRA Rabbit polyclonal antibody (STJ110759) at dilution of 1:100 (40x lens). Perform microwave antigen retrieval with 10 mM PBS buffer pH 7.2 before commencing with immunohistochemistry staining protocol.



Western blot analysis of extracts from normal (control) and HIRA rabbit polyclonal antibody knockout (KO) 293T cells, using HIRA rabbit polyclonal antibody (STJ110759) at 1:1000 dilution. Secondary antibody: HRP Goat Anti-rabbit IgG (H+L) at 1:10000 dilution. Lysates/proteins: 25µg per lane. Blocking buffer: 3% non-fat dry milk in TBST. Detection: ECL Basic Kit. Exposure time: 180s.



Immunohistochemistry analysis of HIRA in paraffin-embedded human lung cancer using [KO Validated] HIRA Rabbit polyclonal antibody (STJ110759) at dilution of 1:100 (40x lens). Perform microwave antigen retrieval with 10 mM PBS buffer pH 7.2 before commencing with immunohistochemistry staining protocol.

This product is suitable for in-vitro studies under the RESEARCH USE ONLY [RUO] licence. This product must not be used as for diagnostic or other medical purposes.
St John's Laboratory Ltd, Knowledge Dock Business Centre, University Way, London, E16 2RD | Tel: 0208 223 3081