

## Anti-NEFH antibody (873-1020) (STJ110740)

STJ110740

### GENERAL INFORMATION

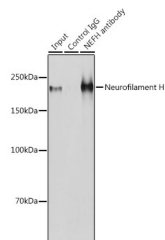
<b>Product Type</b>	Primary antibodies
<b>Short Description</b>	
<b>Applications</b>	WB/IF/ICC/IP/ELISA
<b>Host/Source</b>	Rabbit
<b>Reactivity</b>	Human/Mouse/Rat

### PRODUCT PROPERTIES

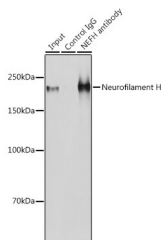
<b>Clonality</b>	Polyclonal
<b>Clone ID</b>	
<b>Concentration</b>	Lot specific
<b>Conjugation</b>	Unconjugated
<b>Purification</b>	Affinity purification
<b>Dilution</b>	WB:1:500-1:1000
<b>Range</b>	IF/CC:1:50-1:200
	IP:0.5 Mu g-4 Mu g antibody for 400 Mu g-600 Mu g extracts of whole cells
	ELISA:Recommended starting concentration is 1 Mu g/mL. Please optimize the concentration based on your specific assay requirements
<b>Formulation</b>	PBS with 0.09% Sodium Azide, 50% Glycerol, pH 7.3.
<b>Isotype</b>	IgG
<b>Storage</b>	Store at-20°C for up to 1 year from the date of receipt, and avoid repeat freeze-thaw cycles.
<b>Instruction</b>	

### TARGET INFORMATION

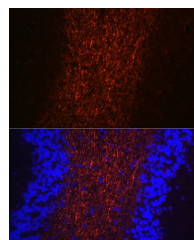
<b>Gene ID</b>	4744
<b>Gene Symbol</b>	NEFH
<b>Uniprot ID</b>	NFH_HUMAN
<b>Immunogen</b>	
<b>Region</b>	873-1020
<b>Specificity</b>	Recombinant fusion protein containing a sequence corresponding to amino acids 873-1020 of human Neurofilament H (NP_066554.2).
<b>Immunogen Sequence</b>	KVEEKKEPAVEKPKESKVEA KKEEAEDKKKVPTEKEAPA KVEVKEDAKPKEKTEVAKKE PDDAKAKEPSKPAEKKEAAP EKKDTEEEKAKKPEEKPKTE AKAKEDDKTLSKEPSKPKAE KAEKSSSTDQKDSKPPEKAT EDKAAKKGK



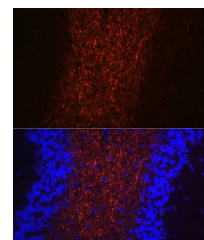
Western blot analysis of extracts of various cell lines, using Neurofilament H antibody (STJ110740) at 1:1000 dilution. Secondary antibody: HRP Goat Anti-rabbit IgG (H+L) at 1:10000 dilution. Lysates/proteins: 25ug per lane. Blocking buffer: 3% non-fat dry milk in TBST. Detection: ECL Basic Kit. Exposure time: 30s.



Immunoprecipitation analysis of 600 Mu g extracts of Mouse brain cells using 3 Mu g Neurofilament H antibody (STJ110740). Western blot was performed from the immunoprecipitate using Neurofilament H antibody (STJ110740) at a dilution of 1:1000.



Immunofluorescence analysis of C6 cells using Neurofilament H rabbit polyclonal antibody (STJ110740) at dilution of 1:100 (40x lens). Blue: DAPI for nuclear staining.



Immunofluorescence analysis of paraffin-embedded mouse brain using Neurofilament H Rabbit polyclonal antibody (STJ110740) at dilution of 1:100 (40x lens). Secondary antibody: Cy3 Goat Anti-Rabbit IgG (H+L) at 1:500 dilution. Blue: DAPI for nuclear staining.

This product is suitable for in-vitro studies under the RESEARCH USE ONLY [RUO] licence. This product must not be used as for diagnostic or other medical purposes.  
St John's Laboratory Ltd, Knowledge Dock Business Centre, University Way, London, E16 2RD | Tel: 0208 223 3081