

Anti-CRHR1 antibody (24-120) (STJ110707)
STJ110707

GENERAL INFORMATION

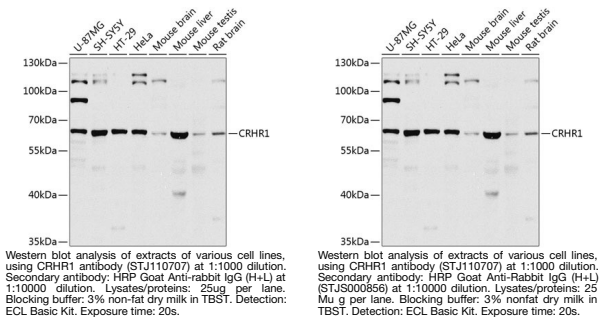
Product Type	Primary antibodies
Short Description	
Applications	WB/ELISA
Host/Source	Rabbit
Reactivity	Human/Mouse/Rat

PRODUCT PROPERTIES

Clonality	Polyclonal
Clone ID	
Concentration	Lot specific
Conjugation	Unconjugated
Purification	Affinity purification
Dilution Range	WB:1:500-1:2000 ELISA:Recommended starting concentration is 1 Mu g/mL. Please optimize the concentration based on your specific assay requirements.
Formulation	PBS with 0.02% Sodium Azide, 50% Glycerol, pH 7.3.
Isotype	IgG
Storage Instruction	Store at -20°C for up to 1 year from the date of receipt, and avoid repeat freeze-thaw cycles.

TARGET INFORMATION

Gene ID	104909134/1394
Gene Symbol	CRHR1
Uniprot ID	CRFR1_HUMAN
Immunogen	
Immunogen Region	24-120
Specificity	Recombinant fusion protein containing a sequence corresponding to amino acids 24-120 of human CRHR1 (NP_001138618.1).
Immunogen Sequence	SLQDQHCESLSLASNISGLQ CNASVDLIGTCWPRSPAGQL VVRPCPAFFYGVRYNTTNG YRECLANGSWAARVNYSECQ EILNEEKSKVHYHVAV



This product is suitable for in-vitro studies under the RESEARCH USE ONLY [RUO] licence. This product must not be used as for diagnostic or other medical purposes.
St John's Laboratory Ltd, Knowledge Dock Business Centre, University Way, London, E16 2RD | Tel: 0208 223 3081