

## Anti-CTSC antibody (25-134) (STJ110701)

STJ110701

### GENERAL INFORMATION

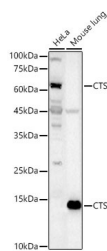
<b>Product Type</b>	Primary antibodies
<b>Short Description</b>	
<b>Applications</b>	WB/IF/ICC/ELISA
<b>Host/Source</b>	Rabbit
<b>Reactivity</b>	Human/Mouse

### PRODUCT PROPERTIES

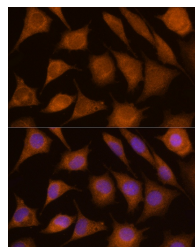
<b>Clonality</b>	Polyclonal
<b>Clone ID</b>	
<b>Concentration</b>	Lot specific
<b>Conjugation</b>	Unconjugated
<b>Purification</b>	Affinity purification
<b>Dilution Range</b>	WB:1:1000-1:5000 IF/ICC:1:50-1:200 ELISA:Recommended starting concentration is 1 µg/mL. Please optimize the concentration based on your specific assay requirements.
<b>Formulation</b>	PBS with 0.02% Sodium Azide, 50% Glycerol, pH 7.3.
<b>Isotype</b>	IgG
<b>Storage Instruction</b>	Store at -20°C for up to 1 year from the date of receipt, and avoid repeat freeze-thaw cycles.

### TARGET INFORMATION

<b>Gene ID</b>	1075
<b>Gene Symbol</b>	CTSC
<b>Uniprot ID</b>	CATC_HUMAN
<b>Immunogen</b>	
<b>Immunogen Region</b>	25-134
<b>Specificity</b>	Recombinant fusion protein containing a sequence corresponding to amino acids 25-134 of human CTSC (NP_001805.3).
<b>Immunogen Sequence</b>	DTPANCTYLDLLGTWVFQVG SSGSQRDVNCSVMGPQEKV VVYLQKLDAYDDLGN SGHF TIYNQGFEIVLNDYKWF AF FKYKEEGSKVTTCNETMTG WVHDLGRNW



Western blot analysis of various lysates, using CTSC rabbit polyclonal antibody (STJ110701) at 1:3000 dilution. Secondary antibody: HRP Goat Anti-rabbit IgG (H+L) (STJS000856) at 1:10000 dilution. Lysates/proteins: 25 µg per lane. Blocking buffer: 3% non-fat dry milk in TBST. Detection: ECL Basic Kit. Exposure time: 90s.



Immunofluorescence analysis of L929 using CTSC antibody (STJ110701) at dilution of 1:100 (40x lens). Blue: DAPI for nuclear staining.