

**Anti-RAB24 antibody (1-203) (STJ110692)**  
STJ110692

**GENERAL INFORMATION**

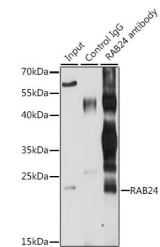
<b>Product Type</b>	Primary antibodies
<b>Short Description</b>	
<b>Applications</b>	WB/IP/ELISA
<b>Host/Source</b>	Rabbit
<b>Reactivity</b>	Human/Mouse/Rat

**PRODUCT PROPERTIES**

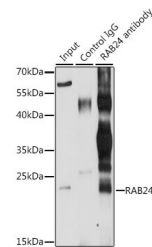
<b>Clonality</b>	Polyclonal
<b>Clone ID</b>	
<b>Concentration</b>	Lot specific
<b>Conjugation</b>	Unconjugated
<b>Purification</b>	Affinity purification
<b>Dilution</b>	WB:1:500-1:2000
<b>Range</b>	IP:0.5 Mu g-4 Mu g antibody for 200 Mu g-400 Mu g extracts of whole cells ELISA:Recommended starting concentration is 1 Mu g/mL. Please optimize the concentration based on your specific assay requirements.
<b>Formulation</b>	PBS with 0.02% Sodium Azide, 50% Glycerol, pH 7.3.
<b>Isotype</b>	IgG
<b>Storage Instruction</b>	Store at -20°C for up to 1 year from the date of receipt, and avoid repeat freeze-thaw cycles.

**TARGET INFORMATION**

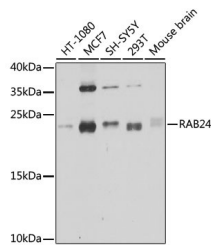
<b>Gene ID</b>	53917
<b>Gene Symbol</b>	RAB24
<b>Uniprot ID</b>	RAB24_HUMAN
<b>Immunogen</b>	
<b>Immunogen Region</b>	1-203
<b>Specificity</b>	Recombinant fusion protein containing a sequence corresponding to amino acids 1-203 of human RAB24 (NP_001026847.1).
<b>Immunogen Sequence</b>	MSGQRVDVKVVMGLKEYVGK TSLVERYVHDFLVGPYQNT IGAAFVAKVMSVGDRTVTLG IWDTAGSERYEAMSRYYRG AKAAIVCYDLTDSSSFERAK FWVKELRSLEEGCQIYLCGT KSDLLEEDRRRRRVDFHDVQ DYADNIKAQLFETSSKTGQS VDLEFQKVAEDYVSAAQVQV MTEDKGVLDLQKPNPYFYSC CHH



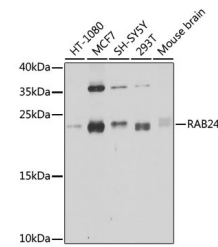
Western blot analysis of extracts of various cell lines, using RAB24 antibody (STJ110692) at 1:1000 dilution. Secondary antibody: HRP Goat Anti-rabbit IgG (H+L) at 1:10000 dilution. Lysates/proteins: 25ug per lane. Blocking buffer: 3% non-fat dry milk in TBST. Detection: ECL Enhanced Kit. Exposure time: 15s.



Immunoprecipitation analysis of 200 Mu g extracts of MCF-7 cells, using 3 Mu g RAB24 antibody (STJ110692). Western blot was performed from the immunoprecipitate using RAB24 antibody (STJ110692) at a dilution of 1:1000.



Immunoprecipitation analysis of 200ug extracts of MCF-7 cells, using 3 ug RAB24 antibody (STJ110692). Western blot was performed from the immunoprecipitate using RAB24 antibody (STJ110692) at a dilution of 1:1000.



Western blot analysis of various lysates using RAB24 Rabbit polyclonal antibody (STJ110692) at 1:1000 dilution. Secondary antibody: HRP Goat Anti-Rabbit IgG (H+L) (STJ5000856) at 1:10000 dilution. Lysates/proteins: 25 Mu g per lane. Blocking buffer: 3% nonfat dry milk in TBST. Detection: ECL Enhanced Kit. Exposure time: 15s.

This product is suitable for in-vitro studies under the RESEARCH USE ONLY [RUO] licence. This product must not be used as for diagnostic or other medical purposes.  
St John's Laboratory Ltd, Knowledge Dock Business Centre, University Way, London, E16 2RD | Tel: 0208 223 3081