

Anti-TMEM189 antibody (171-270) (STJ110678)

GENERAL INFORMATION

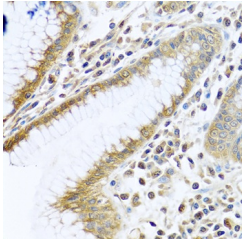
Product Type	Primary antibodies
Short Description	
Applications	WB/IHC-P/ELISA
Host/Source	Rabbit
Reactivity	Human

PRODUCT PROPERTIES

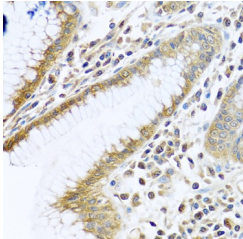
Clonality	Polyclonal
Clone ID	
Concentration	Lot specific
Conjugation	Unconjugated
Purification	Affinity purification
Dilution Range	WB:1:500-1:2000 IHC-P:1:50-1:100 ELISA:Recommended starting concentration is 1 Mu g/mL. Please optimize the concentration based on your specific assay requirements.
Formulation	PBS with 0.02% Sodium Azide, 50% Glycerol, pH 7.3.
Isotype	IgG
Storage Instruction	Store at -20°C for up to 1 year from the date of receipt, and avoid repeat freeze-thaw cycles.

TARGET INFORMATION

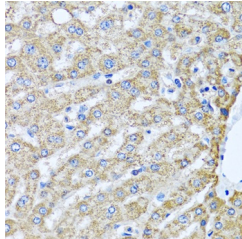
Gene ID	387521/387522
Gene Symbol	PEDS1
Uniprot ID	PDES1_HUMAN
Immunogen	
Immunogen Region	171-270
Specificity	A synthetic peptide corresponding to a sequence within amino acids 171-270 of human TMEM189 (NP_954580.1). FVFCLIFGFTTNQIHKWSH TYFGLPRWVTLQDWHVILP RKHHRIHHVSPHETYFCITT GWLNYPLEKIGFWRRLEDLI
Immunogen Sequence	QGLTGKPRADDMKWAQKIK



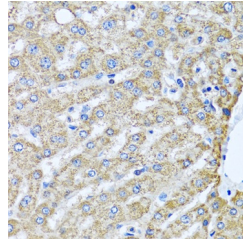
Western blot analysis of extracts of MCF-7 cells, using TMEM189 antibody (STJ110678) at 1:1000 dilution. Secondary antibody: HRP Goat Anti-rabbit IgG (H+L) at 1:10000 dilution. Lysates/proteins: 25ug per lane. Blocking buffer: 3% non-fat dry milk in TBST. Detection: ECL Basic Kit. Exposure time: 90s.



Immunohistochemistry analysis of TMEM189 in paraffin-embedded human stomach using TMEM189 Rabbit polyclonal antibody (STJ110678) at dilution of 1:100 (40x lens). Perform microwave antigen retrieval with 10 mM PBS buffer pH 7. 2 before commencing with immunohistochemistry staining protocol.



Immunohistochemistry of paraffin-embedded human liver using TMEM189 antibody (STJ110678) at dilution of 1:100 (40x lens). Perform microwave antigen retrieval with 10 mM PBS buffer pH 7. 2 before commencing with immunohistochemistry staining protocol.



Immunohistochemistry analysis of TMEM189 in paraffin-embedded human liver using TMEM189 Rabbit polyclonal antibody (STJ110678) at dilution of 1:100 (40x lens). Perform microwave antigen retrieval with 10 mM PBS buffer pH 7. 2 before commencing with immunohistochemistry staining protocol.

This product is suitable for in-vitro studies under the RESEARCH USE ONLY [RUO] licence. This product must not be used as for diagnostic or other medical purposes.
St John's Laboratory Ltd, Knowledge Dock Business Centre, University Way, London, E16 2RD | Tel: 0208 223 3081