

Anti-IL4I1 antibody (22-567) (STJ110676)
STJ110676

GENERAL INFORMATION

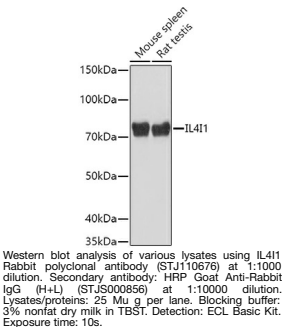
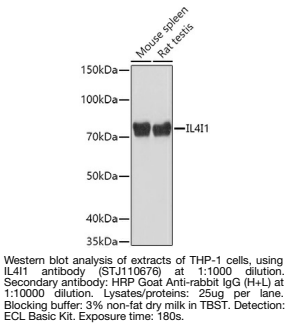
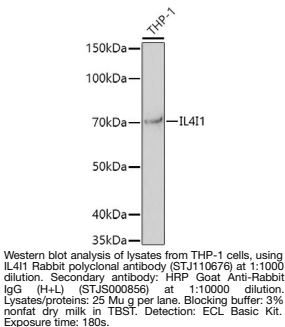
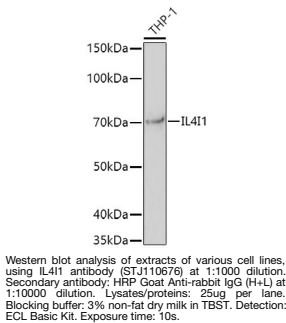
Product Type	Primary antibodies
Short Description	
Applications	WB/ELISA
Host/Source	Rabbit
Reactivity	Human/Mouse/Rat

PRODUCT PROPERTIES

Clonality	Polyclonal
Clone ID	
Concentration	Lot specific
Conjugation	Unconjugated
Purification	Affinity purification
Dilution	WB:1:500-1:1000
Range	ELISA:Recommended starting concentration is 1 Mu g/mL. Please optimize the concentration based on your specific assay requirements.
Formulation	PBS with 0.02% Sodium Azide, 50% Glycerol, pH 7.3.
Isotype	IgG
Storage	Store at -20°C for up to 1 year from the date of receipt, and avoid repeat freeze-thaw cycles.
Instruction	

TARGET INFORMATION

Gene ID	259307
Gene Symbol	IL4I1
Uniprot ID	OXLA_HUMAN
Immunogen	
Immunogen Region	22-567
Specificity	Recombinant fusion protein containing a sequence corresponding to amino acids 22-220 of human IL4I1 (NP_690863.1). QDWKAERSQDPFEKCMQDPD YEQLLKVVTWGLNRTLKPQR VIVVGAGVAGLVAAKVLSDA GHKVTILEADNRIGGRIFTY
Immunogen Sequence	RDQNTGWIGELGAMRMPSSH RILHKLCQGLGLNLTKFTQY DKNTWTEVHEVKLRNYVVEK VPEKLYALRPQEKGHSPED IYQMALNQALKDLKALGCRK AMKKFERHTLLEYLLGEGN



This product is suitable for in-vitro studies under the RESEARCH USE ONLY [RUO] licence. This product must not be used as for diagnostic or other medical purposes.
St John's Laboratory Ltd, Knowledge Dock Business Centre, University Way, London, E16 2RD | Tel: 0208 223 3081