

Anti-PPP6R2 antibody (640-959) (STJ110657)

STJ110657

GENERAL INFORMATION

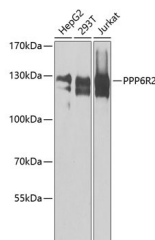
Product Type	Primary antibodies
Short Description	
Applications	WB/ELISA
Host/Source	Rabbit
Reactivity	Human

PRODUCT PROPERTIES

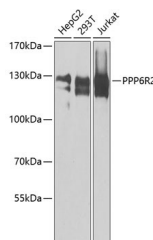
Clonality	Polyclonal
Clone ID	
Concentration	Lot specific
Conjugation	Unconjugated
Purification	Affinity purification
Dilution	WB: 1:500-1:2000
Range	ELISA: Recommended starting concentration is 1 µg/mL. Please optimize the concentration based on your specific assay requirements.
Formulation	PBS with 0.02% Sodium Azide, 50% Glycerol, pH 7.3.
Isotype	IgG
Storage	Store at -20°C for up to 1 year from the date of receipt, and avoid repeat freeze-thaw cycles.
Instruction	

TARGET INFORMATION

Gene ID	9701
Gene Symbol	PPP6R2
Uniprot ID	PP6R2_HUMAN
Immunogen	
Immunogen Region	640-959
Specificity	Recombinant fusion protein containing a sequence corresponding to amino acids 640-959 of human PPP6R2 (NP_001229827.1).
Immunogen Sequence	EDSDTRCAARVMARPRFGAP HASESCSKNGPERGGQDGKA SLEAHRDAPGAGAPPAGKK EAPPVEGDSEGA MWTA VFDE PANSTPTAPGVVRDVGSSVW AAGTSAPEEKGWAKFTDFQP FCCSESGPRCSPVDTECSH AEGSRSQGPEKAFSPASPCA WNVCVTRKAPLLASDSSSSG GSHSEDDGDKAASAMDAVSR GPGREAPPLTVARTEEA VG RVGCADSRLLSPACPAPKE



Western blot analysis of extracts of various cell lines, using PPP6R2 antibody (STJ110657) at 1:1000 dilution. Secondary antibody: HRP Goat Anti-rabbit IgG (H+L) at 1:10000 dilution. Lysates/proteins: 25 µg per lane. Blocking buffer: 3% non-fat dry milk in TBST. Detection: ECL Enhanced Kit. Exposure time: 10s.



Western blot analysis of extracts of various cell lines, using PPP6R2 antibody (STJ110657) at 1:1000 dilution. Secondary antibody: HRP Goat Anti-Rabbit IgG (H+L) (STJS000856) at 1:10000 dilution. Lysates/proteins: 25 µg per lane. Blocking buffer: 3% nonfat dry milk in TBST. Detection: ECL Enhanced Kit. Exposure time: 10s.

This product is suitable for in-vitro studies under the RESEARCH USE ONLY [RUO] licence. This product must not be used as for diagnostic or other medical purposes.
St John's Laboratory Ltd, Knowledge Dock Business Centre, University Way, London, E16 2RD | Tel: 0208 223 3081