

Anti-NUP214 antibody (750-1030) (STJ110655)
STJ110655

GENERAL INFORMATION

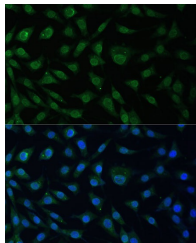
Product Type	Primary antibodies
Short Description	
Applications	WB/IF/ICC/ELISA
Host/Source	Rabbit
Reactivity	Human/Mouse/Rat

PRODUCT PROPERTIES

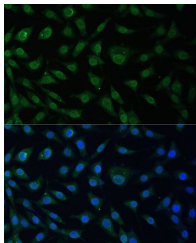
Clonality	Polyclonal
Clone ID	
Concentration	Lot specific
Conjugation	Unconjugated
Purification	Affinity purification
Dilution	WB: 1:500-1:2000
Range	IF/CC: 1:50-1:100
	ELISA: Recommended starting concentration is 1 µg/mL. Please optimize the concentration based on your specific assay requirements.
Formulation	PBS with 0.02% Sodium Azide, 50% Glycerol, pH 7.3.
Isotype	IgG
Storage Instruction	Store at -20°C for up to 1 year from the date of receipt, and avoid repeat freeze-thaw cycles.

TARGET INFORMATION

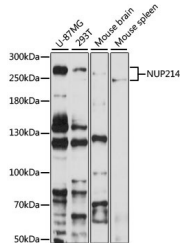
Gene ID	8021
Gene Symbol	NUP214
Uniprot ID	NU214_HUMAN
Immunogen	
Immunogen Region	750-1030
Specificity	Recombinant fusion protein containing a sequence corresponding to amino acids 750-1030 of human NUP214 (NP_005076.3).
Immunogen Sequence	FLLEIKETTESLHGDISLK TTLLEGFAGVEEAREQNERN RDSGYLHLLYKRPLDPKSEA QLQEIRRLHQYVKFAVQDVN DVLDELDQHLQKKKKQRHL LVPERETLFNTLANNREIIN QQRKRLNHLVDSLQQLRLYK QTSLSWLS SAVPSQSSHSF DSDLESCLNALLKTTIESHT KSLPKVPKLSMPMKQAQLRN FLAKRKTPPVRSTAPASLSR SAFLSQRYEYDLDEVSSSTS



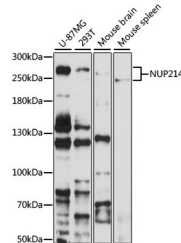
Western blot analysis of extracts of various cell lines, using NUP214 antibody (STJ110655) at 1:1000 dilution. Secondary antibody: HRP Goat Anti-rabbit IgG (H+L) at 1:10000 dilution. Lysates/proteins: 25 µg per lane. Blocking buffer: 3% non-fat dry milk in TBST. Detection: ECL Basic Kit. Exposure time: 60s.



Immunofluorescence analysis of L929 cells using NUP214 Rabbit polyclonal antibody (STJ110655) at dilution of 1:100 (40x lens). Secondary antibody: Cy3 Goat Anti-Rabbit IgG (H+L) at 1:500 dilution. Blue: DAPI for nuclear staining.



Immunofluorescence analysis of L929 cells using NUP214 Polyclonal Antibody (STJ110655) at dilution of 1:100 (40x lens). Blue: DAPI for nuclear staining.



Western blot analysis of various lysates using NUP214 Rabbit polyclonal antibody (STJ110655) at 1:1000 dilution. Secondary antibody: HRP Goat Anti-Rabbit IgG (H+L) (STJ5000856) at 1:10000 dilution. Lysates/proteins: 25 µg per lane. Blocking buffer: 3% nonfat dry milk in TBST. Detection: ECL Basic Kit. Exposure time: 60s.

This product is suitable for in-vitro studies under the RESEARCH USE ONLY [RUO] licence. This product must not be used as for diagnostic or other medical purposes.
St John's Laboratory Ltd, Knowledge Dock Business Centre, University Way, London, E16 2RD | Tel: 0208 223 3081