

Anti-MB21D1 antibody (350-522) (STJ110633)

STJ110633

GENERAL INFORMATION

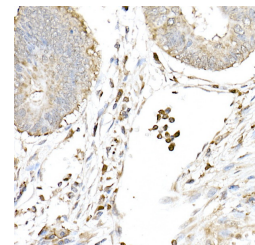
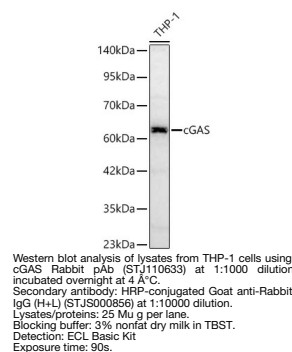
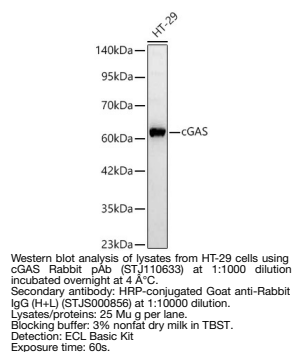
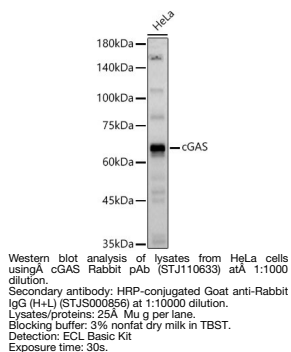
Product Type	Primary antibodies
Short Description	
Applications	WB/IHC-P/IF/ICC/ELISA
Host/Source	Rabbit
Reactivity	Human/Mouse/Rat

PRODUCT PROPERTIES

Clonality	Polyclonal
Clone ID	
Concentration	Lot specific
Conjugation	Unconjugated
Purification	Affinity purification
Dilution	WB: 1:500-1:1000
Range	IHC-P: 1:50-1:200 IF/ICC: 1:50-1:200 ELISA: Recommended starting concentration is 1 µg/mL. Please optimize the concentration based on your specific assay requirements.
Formulation	PBS with 0.09% Sodium Azide, 50% Glycerol, pH 7.3.
Isotype	IgG
Storage	Store at -20°C for up to 1 year from the date of receipt, and avoid repeat freeze-thaw cycles.
Instruction	

TARGET INFORMATION

Gene ID	115004
Gene Symbol	CGAS
Uniprot ID	CGAS_HUMAN
Immunogen	350-522
Region	
Specificity	Recombinant fusion protein containing a sequence corresponding to amino acids 350-522 of human cGAS (NP_612450.2).
Immunogen Sequence	KQLRLKPFYLVPHAKEGNG FQEETWRLSFSHIEKILNN HGKSKTCCENKEEKCCRKDC LKLMKYLLKQKRFKDKKH LDFSSYHVKTAFHVCTQN PQDSQWDRKDLGLCFDNCVT YFLQCLRTEKLENYFIPEFN LFSSNLIDKRSKEFLTQKIE YERNNEFPVFDEF



Immunohistochemistry analysis of paraffin-embedded Human colon carcinoma using cGAS Rabbit pAb (STJ110633) at dilution of 1:50 (40x lens). High pressure antigen retrieval performed with 0.01M Citrate Buffer (pH 6.0) prior to immunohistochemistry staining.

This product is suitable for in-vitro studies under the RESEARCH USE ONLY [RUO] licence. This product must not be used as for diagnostic or other medical purposes.
St John's Laboratory Ltd, Knowledge Dock Business Centre, University Way, London, E16 2RD | Tel: 0208 223 3081