

# Anti-IL25 antibody (33-177) (STJ110551)

STJ110551

## GENERAL INFORMATION

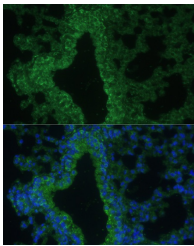
|                          |                    |
|--------------------------|--------------------|
| <b>Product Type</b>      | Primary antibodies |
| <b>Short Description</b> |                    |
| <b>Applications</b>      | WB/IF/ICC/ELISA    |
| <b>Host/Source</b>       | Rabbit             |
| <b>Reactivity</b>        | Human/Mouse/Rat    |

## PRODUCT PROPERTIES

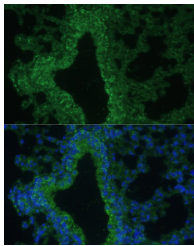
|                            |   |
|----------------------------|---|
| <b>Clonality</b>           | Polyclonal  |
| <b>Clone ID</b>            |   |
| <b>Concentration</b>       | Lot specific  |
| <b>Conjugation</b>         | Unconjugated  |
| <b>Purification</b>        | Affinity purification   |
| <b>Dilution</b>            | WB:1:500-1:2000   |
| <b>Range</b>               | IF/CC:1:50-1:200<br>ELISA:Recommended starting concentration is 1 Mu g/mL. Please optimize the concentration based on your specific assay requirements. |
| <b>Formulation</b>         | PBS with 0.05% Proclin300, 50% Glycerol, pH 7.3.  |
| <b>Isotype</b>             | IgG   |
| <b>Storage Instruction</b> | Store at -20°C for up to 1 year from the date of receipt, and avoid repeat freeze-thaw cycles.  |

## TARGET INFORMATION

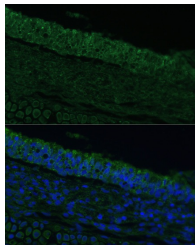
|                           |   |
|---------------------------|---|
| <b>Gene ID</b>            | 64806   |
| <b>Gene Symbol</b>        | IL25  |
| <b>Uniprot ID</b>         | IL25_HUMAN  |
| <b>Immunogen</b>          |   |
| <b>Immunogen Region</b>   | 33-177  |
| <b>Specificity</b>        | Recombinant fusion protein containing a sequence corresponding to amino acids 33-177 of human IL25 (NP_073626.1).   |
| <b>Immunogen Sequence</b> | YSHWPSCCPSKGQDTSEELL RWSTVPVPPLEPARPNRHPE SCRASEDGPLNSRAISPWRY ELDRDLNRLPQDLYHARCLC<br>PHCVSLQTGSHMDPRGNSEL LYHNQTVFYRRPCHGEKGTH KGYCLERRLYRVSLACVCVR PRVMG |



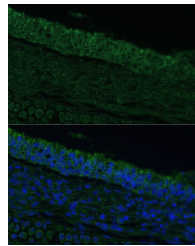
Western blot analysis of extracts of various cell lines, using IL25 antibody (STJ110551) at 1:1000 dilution. Secondary antibody: HRP Goat Anti-rabbit IgG (H+L) at 1:10000 dilution. Lysates/proteins: 25ug per lane. Blocking buffer: 3% non-fat dry milk in TBST. Detection: ECL Enhanced Kit. Exposure time: 60s.



Immunofluorescence analysis of paraffin-embedded mouse lung using IL25 Rabbit polyclonal antibody (STJ110551) at dilution of 1:100. Secondary antibody: Cy3 Goat Anti-Rabbit IgG (H+L) at 1:500 dilution. Blue: DAPI for nuclear staining.



Immunofluorescence analysis of human lung cancer cells using IL25 antibody (STJ110551) at dilution of 1:100. Secondary antibody: Cy3 Goat Anti-Rabbit IgG (H+L) at 1:500 dilution. Blue: DAPI for nuclear staining.



Immunofluorescence analysis of paraffin-embedded rat bronchus using IL25 Rabbit polyclonal antibody (STJ110551) at dilution of 1:100. Secondary antibody: Cy3 Goat Anti-Rabbit IgG (H+L) at 1:500 dilution. Blue: DAPI for nuclear staining.

This product is suitable for in-vitro studies under the RESEARCH USE ONLY [RUO] licence. This product must not be used as for diagnostic or other medical purposes.  
St John's Laboratory Ltd, Knowledge Dock Business Centre, University Way, London, E16 2RD | Tel: 0208 223 3081