

**Anti-MT-ATP6 antibody (209-226) (STJ110492)**  
STJ110492

**GENERAL INFORMATION**

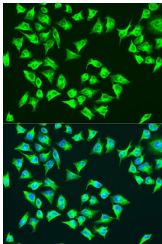
<b>Product Type</b>	Primary antibodies
<b>Short Description</b>	
<b>Applications</b>	WB/IHC-P/IF/ICC/ELISA
<b>Host/Source</b>	Rabbit
<b>Reactivity</b>	Human/Mouse

**PRODUCT PROPERTIES**

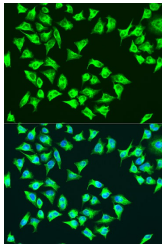
<b>Clonality</b>	Polyclonal
<b>Clone ID</b>	
<b>Concentration</b>	Lot specific
<b>Conjugation</b>	Unconjugated
<b>Purification</b>	Affinity purification
<b>Dilution Range</b>	WB:1:500-1:2000 IHC-P:1:100-1:200 IF/ICC:1:50-1:200 ELISA:Recommended starting concentration is 1 Mu g/mL. Please optimize the concentration based on your specific assay requirements.
<b>Formulation</b>	PBS with 0.09% Sodium Azide, 50% Glycerol, pH 7.3.
<b>Isotype</b>	IgG
<b>Storage Instruction</b>	Store at -20°C for up to 1 year from the date of receipt, and avoid repeat freeze-thaw cycles.

**TARGET INFORMATION**

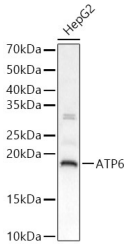
<b>Gene ID</b>	17705
<b>Gene Symbol</b>	Mtstp6
<b>Uniprot ID</b>	ATP6_MOUSE
<b>Immunogen</b>	
<b>Immunogen Region</b>	209-226
<b>Specificity</b>	A synthetic peptide corresponding to a sequence within amino acids 127-226 of mouse ATP6 (NP_904333.1).
<b>Immunogen Sequence</b>	HFLPQGTPLSLPMLIIET ISLFIQPMALAVRLTANITA GHLLMHLIGGATLVLNMISP PTATITFIILLLTILEFAV ALIQAYVFTLLVSLYLHDNT



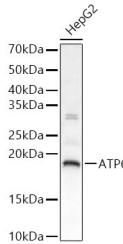
Western blot analysis of extracts of various cell lines, using ATP6 antibody (STJ110492) at 1:1000 dilution. Secondary antibody: HRP Goat Anti-rabbit IgG (H+L) at 1:10000 dilution. Lysates/proteins: 25ug per lane. Blocking buffer: 3% non-fat dry milk in TBST. Detection: ECL Enhanced Kit. Exposure time: 10s.



Immunofluorescence analysis of U2OS cells using ATP6 Rabbit polyclonal antibody (STJ110492) at dilution of 1:100. Secondary antibody: Cy3 Goat Anti-Rabbit IgG (H+L) at 1:10000 dilution. Lysates/proteins: 25ug per lane. Blocking buffer: 3% non-fat dry milk in TBST. Detection: ECL Enhanced Kit. Exposure time: 10s.



Immunofluorescence analysis of U2OS cells using ATP6 antibody (STJ110492) at dilution of 1:100. Blue: DAPI for nuclear staining.



Western blot analysis of lysates from HepG2 cells, using ATP6 Rabbit polyclonal antibody (STJ110492) at 1:2000 dilution. Secondary antibody: HRP Goat Anti-Rabbit IgG (H+L) (STJS000656) at 1:10000 dilution. Lysates/proteins: 25ug per lane. Blocking buffer: 3% nonfat dry milk in TBST. Detection: ECL Basic Kit. Exposure time: 20s.