

Anti-STK38 antibody (418-465) (STJ110490)

STJ110490

GENERAL INFORMATION

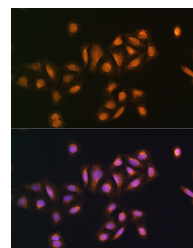
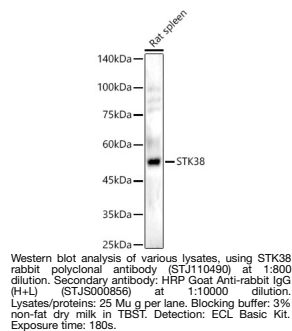
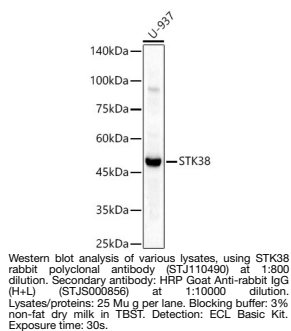
Product Type	Primary antibodies
Short Description	
Applications	WB/IF/ICC/ELISA
Host/Source	Rabbit
Reactivity	Human/Mouse/Rat

PRODUCT PROPERTIES

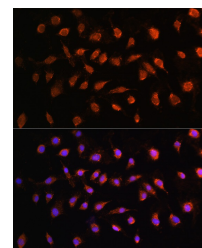
Clonality	Polyclonal
Clone ID	
Concentration	Lot specific
Conjugation	Unconjugated
Purification	Affinity purification
Dilution Range	WB:1:500-1:1000 IF/ICC:1:50-1:200 ELISA:Recommended starting concentration is 1 Mu g/mL. Please optimize the concentration based on your specific assay requirements.
Formulation	PBS with 0.02% Sodium Azide, 50% Glycerol, pH 7.3.
Isotype	IgG
Storage Instruction	Store at -20°C for up to 1 year from the date of receipt, and avoid repeat freeze-thaw cycles.

TARGET INFORMATION

Gene ID	11329
Gene Symbol	STK38
Uniprot ID	STK38_HUMAN
Immunogen	
Immunogen Region	418-465
Specificity	A synthetic peptide corresponding to a sequence within amino acids 366-465 of human STK38 (NP_009202.1). HRIGAPGVVEIKSNSFFEGV DWEHIRERPAAISIEIKSID DTSNFDEFPESDILKPTVAT SNHPETDYKNKDWWFINYTY
Immunogen Sequence	KRFEGLTARGAIPSYMKAAC



Immunofluorescence analysis of U2OS cells using STK38 antibody (STJ110490) at dilution of 1:100. Blue: DAPI for nuclear staining.



Immunofluorescence analysis of L929 cells using STK38 antibody (STJ110490) at dilution of 1:100. Blue: DAPI for nuclear staining.

This product is suitable for in-vitro studies under the RESEARCH USE ONLY [RUO] licence. This product must not be used as for diagnostic or other medical purposes.
St John's Laboratory Ltd, Knowledge Dock Business Centre, University Way, London, E16 2RD | Tel: 0208 223 3081