

Anti-P2RY14 antibody (209-338) (STJ110477)
STJ110477

GENERAL INFORMATION

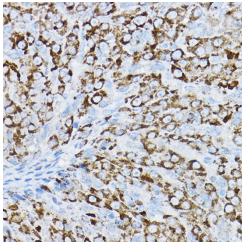
Product Type	Primary antibodies
Short Description	
Applications	WB/IHC-P/ELISA
Host/Source	Rabbit
Reactivity	Human/Mouse/Rat

PRODUCT PROPERTIES

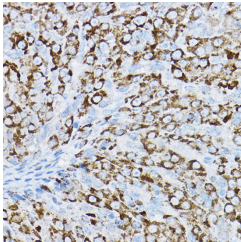
Clonality	Polyclonal
Clone ID	
Concentration	Lot specific
Conjugation	Unconjugated
Purification	Affinity purification
Dilution Range	WB:1:500-1:2000 IHC-P:1:50-1:200 ELISA:Recommended starting concentration is 1 μ g/mL. Please optimize the concentration based on your specific assay requirements.
Formulation	PBS with 0.02% Sodium Azide, 50% Glycerol, pH 7.3.
Isotype	IgG
Storage Instruction	Store at -20°C for up to 1 year from the date of receipt, and avoid repeat freeze-thaw cycles.

TARGET INFORMATION

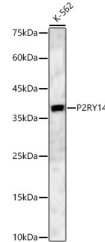
Gene ID	9934
Gene Symbol	P2RY14
Uniprot ID	P2Y14_HUMAN
Immunogen	
Immunogen Region	209-338
Specificity	Recombinant fusion protein containing a sequence corresponding to amino acids 209-338 of human P2RY14 (NP_055694.3).
Immunogen Sequence	ITKKIFKSHLKSSRNSTSVK KKSSRNIFSIVFFVCFVP YHARIPTYKSQTEAHYSCQ SKEILRYMKEFTLLLSAANV CLDPIYFFLCQPFREILCK KLHIPLKAQNLDISRIKRG NTTLESTDTL



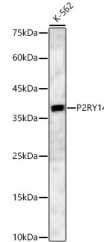
Western blot analysis of extracts of various cell lines, using P2RY14 antibody (STJ110477) at 1:1000 dilution. Secondary antibody: HRP Goat Anti-rabbit IgG (H+L) at 1:10000 dilution. Lysates/proteins: 25ug per lane. Blocking buffer: 3% non-fat dry milk in TBST. Detection: ECL Basic Kit. Exposure time: 90s.



Immunohistochemistry analysis of paraffin-embedded rat ovary using P2RY14 Rabbit polyclonal antibody (STJ110477) at dilution of 1:200 (40x lens). Perform high pressure antigen retrieval with 10 mM citrate buffer pH 6.0 before commencing with immunohistochemistry staining protocol.



Immunohistochemistry of paraffin-embedded rat ovary using P2RY14 rabbit polyclonal antibody (STJ110477) at dilution of 1:200 (40x lens).



Western blot analysis of K-562, using P2RY14 Rabbit polyclonal antibody (STJ110477) at 1:1500 dilution. Secondary antibody: HRP Goat Anti-Rabbit IgG (H+L) (STJS000856) at 1:10000 dilution. Lysates/proteins: 25 μ g per lane. Blocking buffer: 3% nonfat dry milk in TBST. Detection: ECL Basic Kit. Exposure time: 30s.