

## Anti-GPRC5A antibody (268-357) (STJ110472)

STJ110472

### GENERAL INFORMATION

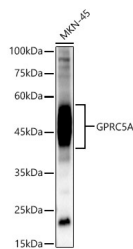
<b>Product Type</b>	Primary antibodies
<b>Short Description</b>	
<b>Applications</b>	WB/ELISA
<b>Host/Source</b>	Rabbit
<b>Reactivity</b>	Human/Mouse

### PRODUCT PROPERTIES

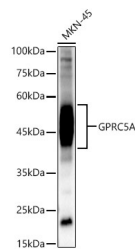
<b>Clonality</b>	Polyclonal
<b>Clone ID</b>	
<b>Concentration</b>	Lot specific
<b>Conjugation</b>	Unconjugated
<b>Purification</b>	Affinity purification
<b>Dilution Range</b>	WB:1:500-1:2000 ELISA:Recommended starting concentration is 1 $\mu$ g/mL. Please optimize the concentration based on your specific assay requirements.
<b>Formulation</b>	PBS with 0.02% Sodium Azide, 50% Glycerol, pH 7.3.
<b>Isotype</b>	IgG
<b>Storage Instruction</b>	Store at -20°C for up to 1 year from the date of receipt, and avoid repeat freeze-thaw cycles.

### TARGET INFORMATION

<b>Gene ID</b>	9052
<b>Gene Symbol</b>	GPRC5A
<b>Uniprot ID</b>	RAI3_HUMAN
<b>Immunogen</b>	
<b>Immunogen Region</b>	268-357
<b>Specificity</b>	Recombinant fusion protein containing a sequence corresponding to amino acids 268-357 of human GPRC5A (NP_003970.1).
<b>Immunogen Sequence</b>	LTKQRNPM DYPVEDAFCKPQ LVKKS YGVENRAYSQEEITQ GFETGDTLYAPYSTHFQLQ NQPPQKEFSIPRAHAWPSPY KDYE VKKEGS



Western blot analysis of extracts of various cell lines, using GPRC5A antibody (STJ110472) at 1:1000 dilution. Secondary antibody: HRP Goat Anti-rabbit IgG (H+L) at 1:10000 dilution. Lysates/proteins: 25  $\mu$ g per lane. Blocking buffer: 3% non-fat dry milk in TBST. Detection: ECL Basic Kit. Exposure time: 15s.



Western blot analysis of MKN-45, using GPRC5A Rabbit polyclonal antibody (STJ110472) at 1:2000 dilution. Secondary antibody: HRP Goat Anti-Rabbit IgG (H+L) (STJS000856) at 1:10000 dilution. Lysates/proteins: 25  $\mu$ g per lane. Blocking buffer: 3% nonfat dry milk in TBST. Detection: ECL Basic Kit. Exposure time: 30s.

This product is suitable for in-vitro studies under the RESEARCH USE ONLY [RUO] licence. This product must not be used as for diagnostic or other medical purposes.  
St John's Laboratory Ltd, Knowledge Dock Business Centre, University Way, London, E16 2RD | Tel: 0208 223 3081