

Anti-Kdm6a antibody (550-700) (STJ110458)
STJ110458

GENERAL INFORMATION

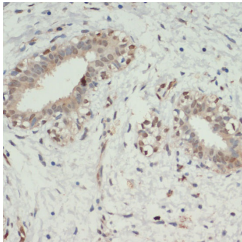
Product Type	Primary antibodies
Short Description	
Applications	WB/IHC-P/ELISA
Host/Source	Rabbit
Reactivity	Human/Mouse/Rat

PRODUCT PROPERTIES

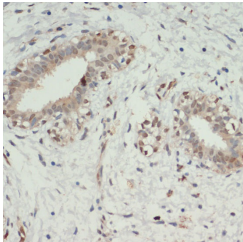
Clonality	Polyclonal
Clone ID	
Concentration	Lot specific
Conjugation	Unconjugated
Purification	Affinity purification
Dilution Range	WB:1:500-1:1000 IHC-P:1:50-1:200 ELISA:Recommended starting concentration is 1 Mu g/mL. Please optimize the concentration based on your specific assay requirements.
Formulation	PBS with 0.09% Sodium Azide, 50% Glycerol, pH 7.3.
Isotype	IgG
Storage Instruction	Store at -20°C for up to 1 year from the date of receipt, and avoid repeat freeze-thaw cycles.

TARGET INFORMATION

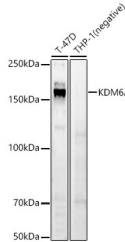
Gene ID	22289
Gene Symbol	Kdm6a
Uniprot ID	KDM6A_MOUSE
Immunogen Region	550-700
Specificity	Recombinant fusion protein containing a sequence corresponding to amino acids 550-700 of mouse KDM6A (NP_033509.1).
Immunogen Sequence	MPSVSQPGVHTACPRQTLAN GPFSAGHVPCSTSRTLGSTD TVLIGNNHVTGSGSNGNVPY LQRNAPTLPHNRTNLTSSSTE EPWKNQLSNSQTGLHKGPSS HLAGPNGERPLSSTGPSQHL QAAGSGIQNQNGHPTLPSNS VTQGAALNHL



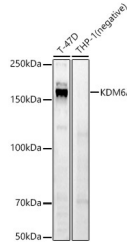
Western blot analysis of extracts of various cell lines, using KDM6A antibody (STJ110458) at 1:1000 dilution. Secondary antibody: HRP Goat Anti-rabbit IgG (H+L) at 1:10000 dilution. Lysates/proteins: 25ug per lane. Blocking buffer: 3% non-fat dry milk in TBST. Detection: ECL Basic Kit. Exposure time: 40s.



Immunohistochemistry analysis of paraffin-embedded human breast cancer using Kdm6a antibody (STJ110458) at dilution of 1:200 (40x lens). Perform microwave antigen retrieval with 10 mM PBS buffer pH 7.2 before commencing with immunohistochemistry staining protocol.



Immunohistochemistry of paraffin-embedded human breast cancer using Kdm6a antibody (STJ110458) at dilution of 1:200 (40x lens).



Western blot analysis of various lysates, using KDM6A antibody (STJ110458) at 1:700 dilution. Secondary antibody: HRP Goat Anti-Rabbit IgG (H+L) (STJS000856) at 1:10000 dilution. Lysates/proteins: 25 Mu g per lane. Blocking buffer: 3% nonfat dry milk in TBST. Detection: ECL Basic Kit. Exposure time: 60s.

This product is suitable for in-vitro studies under the RESEARCH USE ONLY [RUO] licence. This product must not be used as for diagnostic or other medical purposes.
St John's Laboratory Ltd, Knowledge Dock Business Centre, University Way, London, E16 2RD | Tel: 0208 223 3081