

Anti-TRPC6 antibody (466-565) (STJ110454)

STJ110454

GENERAL INFORMATION

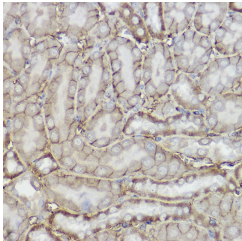
Product Type	Primary antibodies
Short Description	
Applications	WB/IHC-P/ELISA
Host/Source	Rabbit
Reactivity	Human/Mouse/Rat

PRODUCT PROPERTIES

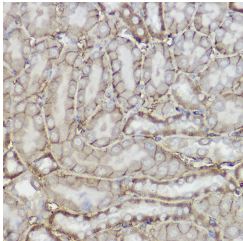
Clonality	Polyclonal
Clone ID	
Concentration	Lot specific
Conjugation	Unconjugated
Purification	Affinity purification
Dilution Range	WB:1:500-1:1000 IHC-P:1:50-1:200 ELISA:Recommended starting concentration is 1 Mu g/mL. Please optimize the concentration based on your specific assay requirements.
Formulation	PBS with 0.02% Sodium Azide, 50% Glycerol, pH 7.3.
Isotype	IgG
Storage Instruction	Store at -20°C for up to 1 year from the date of receipt, and avoid repeat freeze-thaw cycles.

TARGET INFORMATION

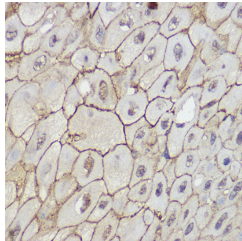
Gene ID	7225
Gene Symbol	TRPC6
Uniprot ID	TRPC6_HUMAN
Immunogen	
Immunogen Region	466-565
Specificity	A synthetic peptide corresponding to a sequence within amino acids 466-565 of human TRPC6 (NP_004612.2).
Immunogen Sequence	EGTKLLPNETSTDNAKQLFR MKTSCFSWMEMLIISWVIGM IWAECKEIWTQGPKEYLFEL WNMLDFGMLAIFAASFIARF MAFWHASKAQSIIIDNTLK



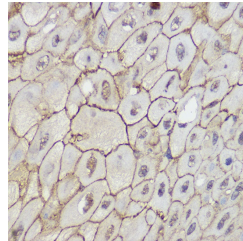
Western blot analysis of extracts of mouse pancreas, using TRPC6 antibody (STJ110454) at 1:1000 dilution. Secondary antibody: HRP Goat Anti-rabbit IgG (H+L) at 1:10000 dilution. Lysates/proteins: 25ug per lane. Blocking buffer: 3% non-fat dry milk in TBST. Detection: ECL Basic Kit. Exposure time: 3s.



Immunohistochemistry analysis of paraffin-embedded mouse kidney using TRPC6 Rabbit polyclonal antibody (STJ110454) at dilution of 1:100 (40x lens). Perform high pressure antigen retrieval with 10 mM citrate buffer pH 6.0 before commencing with immunohistochemistry staining protocol.



Western blot analysis of extracts of Rat brain, using TRPC6 antibody (STJ110454) at 1:1000 dilution. Secondary antibody: HRP Goat Anti-rabbit IgG (H+L) at 1:10000 dilution. Lysates/proteins: 25ug per lane. Blocking buffer: 3% non-fat dry milk in TBST. Detection: ECL Basic Kit. Exposure time: 10s.



Immunohistochemistry analysis of paraffin-embedded human esophageal cancer using TRPC6 Rabbit polyclonal antibody (STJ110454) at dilution of 1:100 (40x lens). Perform high pressure antigen retrieval with 10 mM citrate buffer pH 6.0 before commencing with immunohistochemistry staining protocol.

This product is suitable for in-vitro studies under the RESEARCH USE ONLY [RUO] licence. This product must not be used as for diagnostic or other medical purposes.
St John's Laboratory Ltd, Knowledge Dock Business Centre, University Way, London, E16 2RD | Tel: 0208 223 3081