

Anti-ATP5O antibody (24-213) (STJ110402)

STJ110402

GENERAL INFORMATION

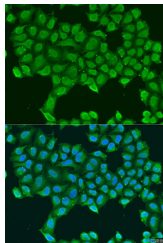
Product Type	Primary antibodies
Short Description	
Applications	WB/IHC-P/IF/ICC/ELISA
Host/Source	Rabbit
Reactivity	Human/Mouse/Rat

PRODUCT PROPERTIES

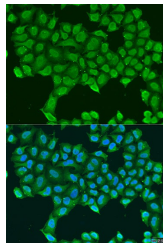
Clonality	Polyclonal
Clone ID	
Concentration	Lot specific
Conjugation	Unconjugated
Purification	Affinity purification
Dilution	WB: 1:500-1:2000
Range	IHC-P: 1:50-1:200 IF/ICC: 1:50-1:200 ELISA: Recommended starting concentration is 1 µg/mL. Please optimize the concentration based on your specific assay requirements.
Formulation	PBS with 0.02% Sodium Azide, 50% Glycerol, pH 7.3.
Isotype	IgG
Storage	Store at -20°C for up to 1 year from the date of receipt, and avoid repeat freeze-thaw cycles.
Instruction	

TARGET INFORMATION

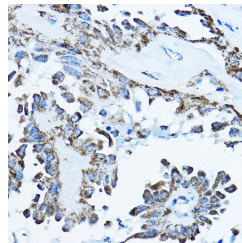
Gene ID	539
Gene Symbol	ATP5PO
Uniprot ID	ATPO_HUMAN
Immunogen	
Immunogen Region	24-213
Specificity	Recombinant fusion protein containing a sequence corresponding to amino acids 24-213 of human ATP5O (NP_001688.1).
Immunogen Sequence	FAKLVRPPVQVYGIEGRYAT ALYSAASKQNKLEQVEKELL RVAQILKEPKVAASVLNPPYV KRSIKVKSLNDITAKERFSP LTTNLINLLAENGRLSNTQG WSAFSTMMSVHRGEVPCTV TSASPLEEATLSELKTVLKS FLSQGQVLKLEAKTDP SILG GMIVRIGKEYVDM SVKTKIQ KLGRAMREIV



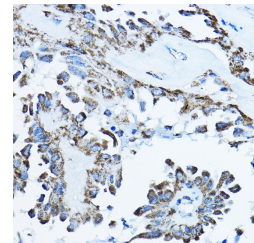
Western blot analysis of extracts of various cell lines, using ATP5O antibody (STJ110402) at 1:1000 dilution. Secondary antibody: HRP Goat Anti-rabbit IgG (H+L) at 1:10000 dilution. Lysates/proteins: 25µg per lane. Blocking buffer: 3% non-fat dry milk in TBST. Detection: ECL Basic Kit. Exposure time: 90s.



Immunofluorescence analysis of U2OS cells using ATP5O antibody (STJ110402) at dilution of 1:100. Blue: DAPI for nuclear staining.



Immunohistochemistry of paraffin-embedded rat stomach using ATP5O rabbit polyclonal antibody (STJ110402) at dilution of 1:100 (40x lens).



Immunohistochemistry analysis of paraffin-embedded human thyroid cancer using ATP5O Rabbit polyclonal antibody (STJ110402) at dilution of 1:100 (40x lens). Perform high pressure antigen retrieval with 10 mM citrate buffer pH 6.0 before commencing with immunohistochemistry staining protocol.

This product is suitable for in-vitro studies under the RESEARCH USE ONLY [RUO] licence. This product must not be used as for diagnostic or other medical purposes.
St John's Laboratory Ltd, Knowledge Dock Business Centre, University Way, London, E16 2RD | Tel: 0208 223 3081